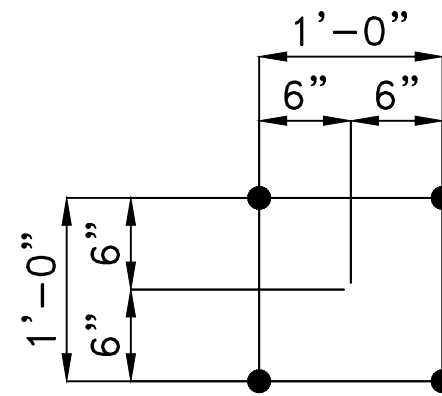
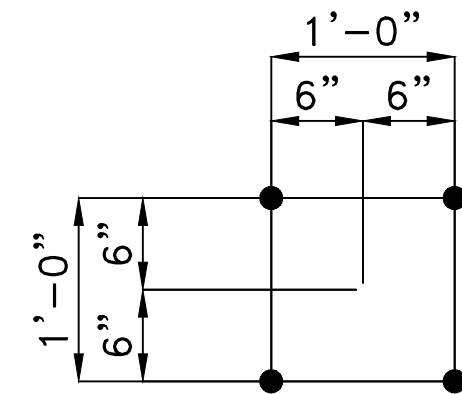


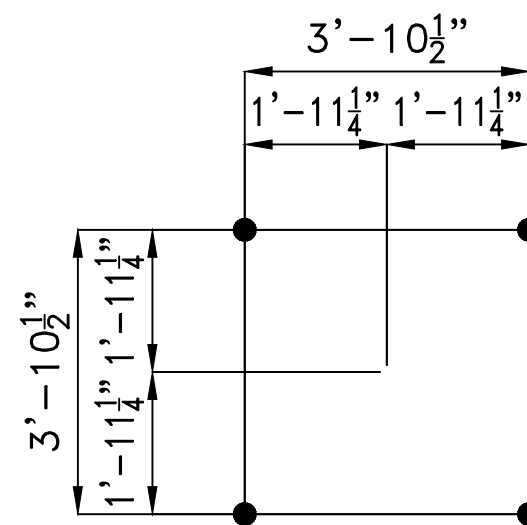
AB-1 ~ (6) PATTERNS REQ'D
(24) 1-1/4" A.B.



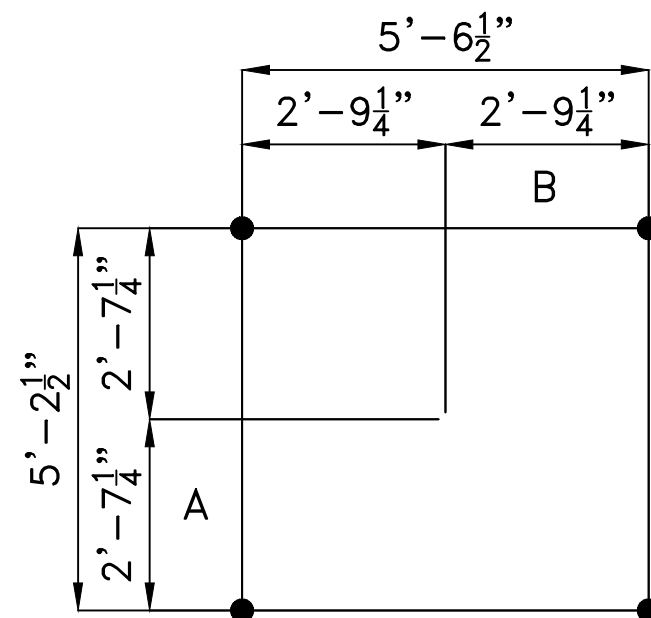
AB-2 ~ (1) PATTERNS REQ'D
(4) 1-1/4" A.B.



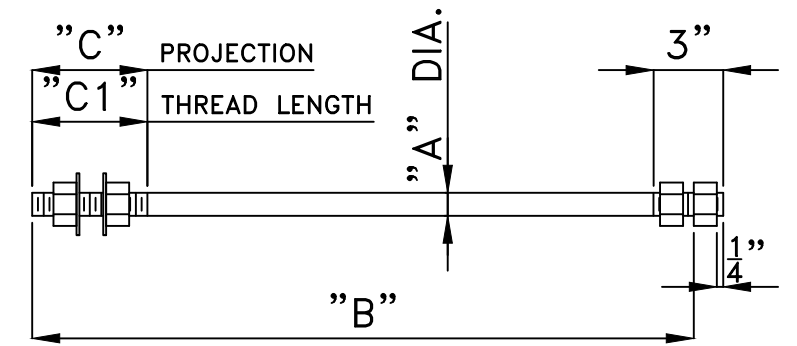
AB-3 ~ (2) PATTERNS REQ'D
(8) 1-1/4" A.B.



AB-4 ~ (2) PATTERNS REQ'D
(8) 1" ALL-THD A.B.

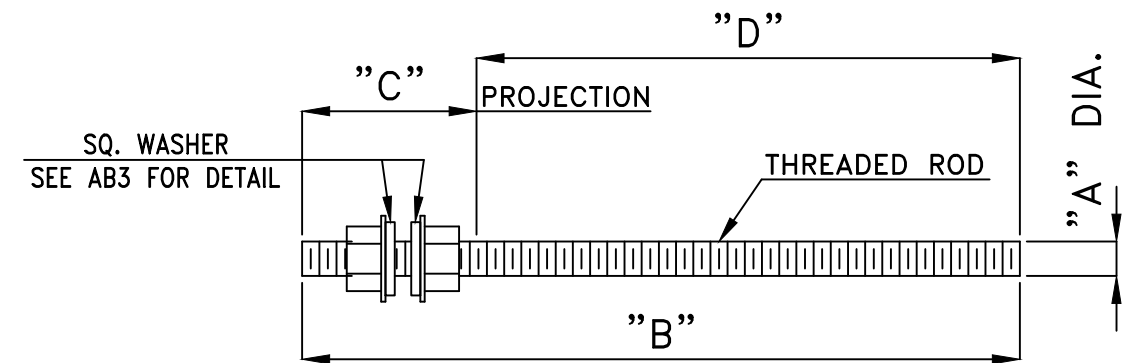


AB-5 ~ (1) PATTERNS REQ'D
(4) 1" ALL-THD A.B.



TOTAL LENGTH						
ITEM#	QTY.	"A"	"B"	"C"	"C1"	"L"
AB-1	(24)	1-1/4"	3'-7 1/2"	9"	9"	3'-9"
AB-2	(4)	1-1/4"	3'-7 1/2"	9"	9"	3'-9"
AB-3	(8)	1-1/4"	3'-7 1/2"	9"	9"	3'-9"

PLEASE NOTE TOTAL LENGTH OF ANCHOR BOLT IS LONGER THAN "B" DIMENSION, SEE "L"



ITEM#	QTY.	"A"	"B"	"C"	"D"
AB-4	(8)	1"	1'-1 1/2"	4 1/2"	9"
AB-5	(4)	1"	1'-1 1/2"	4 1/2"	9"

NOTE: HILTI RE500 EPOXY SYSTEM TO BE USED.

FINAL
FOR
CONSTRUCTION
DATE: 07-30-25 BY: CHD

REV	DATE	DESCRIPTION
3	07-30-2025	ADDED ORIENTATION MARKS A & B TO PATTERN AB-5.
2	02-28-2025	CORRECTED AB-5 PROJ.; ADDED AB3 FOR BKR WASHER DETAILS.
1	02-26-2025	CHANGED BREAKER ANCHOR SIZE / TYPE PER CUSTOMER APPROVAL.

Substation Enterprises, Inc.

145 Commercial Court, P.O. Box 2010
Alabaster, AL 35007
Phone: (205)685-2755, Fax: (205)685-2753

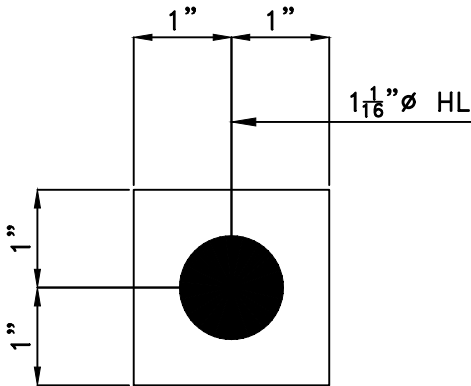
JACKSONVILLE ELECTRIC AUTHORITY

MERRILL ROAD (69/26kV) SUBSTATION

ANCHOR BOLT DETAILS

DATE: 01-31-25 DRAWN BY: LJW CHECKED BY: LJW DRAWING NUMBER: J-6799-AB2
SCALE: NONE APPROVED BY:

BILL OF MATERIAL					
ITEM	QTY	DESCRIPTION	FT	INCHES	WT
	(24)	FOR ONE 1SW			
1P	1	PL 1/4x2	0	2	1
		GALV.			1
		TOTAL WEIGHT			2




SQUARE WASHER – 1SW – 24 REQ'D

ASTM A36 PLATE

- STEEL NOTES:
- 1. ALL STEEL HOT-DIP GALVANIZED AFTER FABRICATION.
 - 2. PIECE MARK STAMPED INTO METAL WITH NOT LESS THAN 3/8" INCH CHARACTERS BEFORE GALVANIZING.
 - 3. ALL HOLES 11/16" FOR 5/8" BOLTS UNLESS NOTED.
 - 4. EDGE DISTANCE 1" UNLESS NOTED.
 - 5. ALL STEEL SHAPES ASTM A36 UNLESS NOTED.

REV	DATE	DESCRIPTION



Substation Enterprises, Inc.
145 Commercial Court, P.O. Box 2010
Alabaster, AL 35007
Phone: (205)685-2755, Fax: (205)685-2753


JACKSONVILLE ELECTRIC AUTHORITY

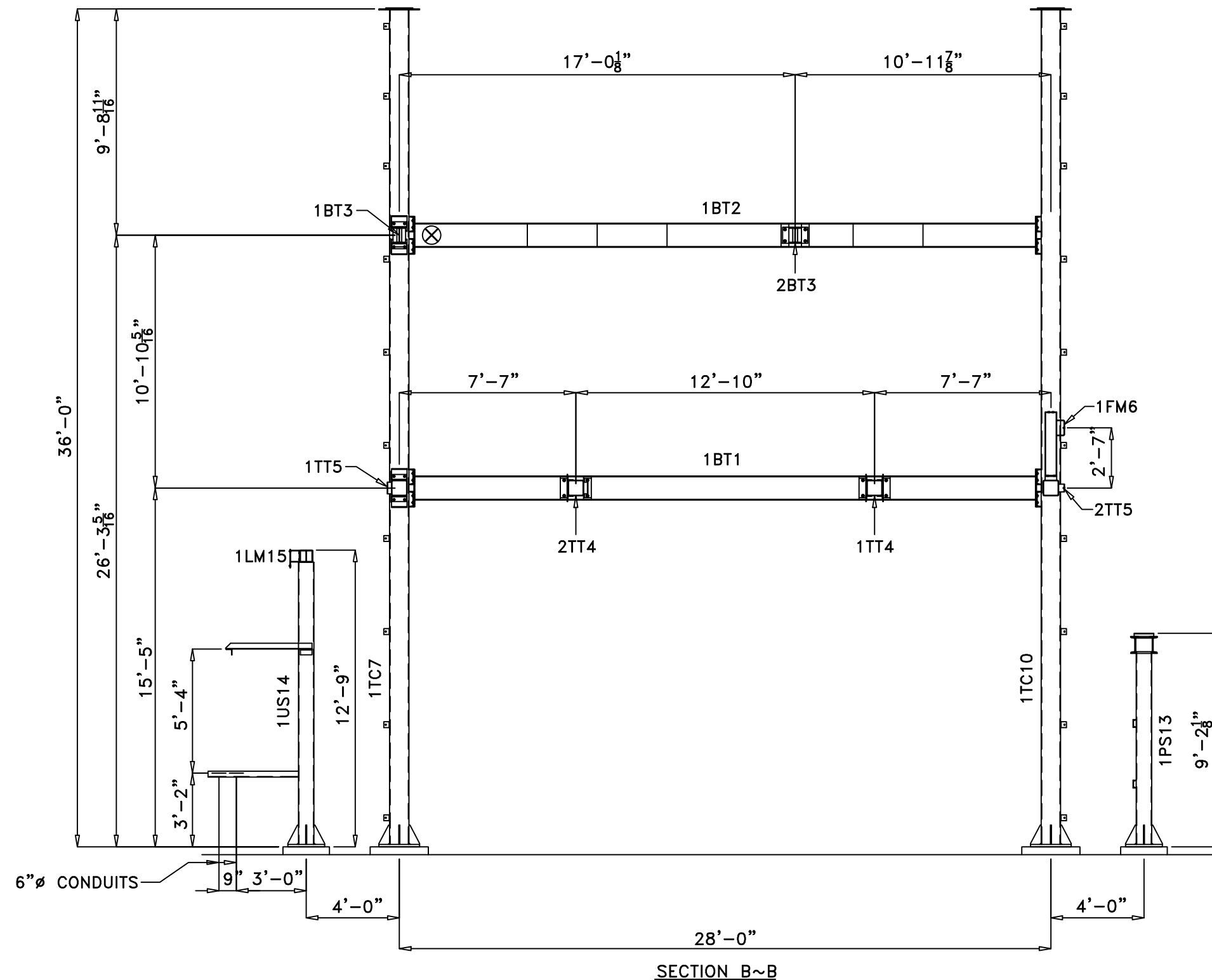
MERRILL ROAD (69/26kV) SUBSTATION

STEEL DETAILS – ANCHOR BOLT WASHERS

DATE: 02-28-25	DRAWN BY: LJW	CHECKED BY: LJW	DRAWING NUMBER:
SCALE: NONE	APPROVED BY:		J-6799-AB3



 <h1 style="text-align: center;">Substation Enterprises, Inc.</h1>			
145 Commercial Court, P.O. Box 2010 Alabaster, AL 35007 Phone: (205)685-2755, Fax: (205)685-2753			
JACKSONVILLE ELECTRIC AUTHORITY			
MERRILL ROAD (69/26kV) SUBSTATION			
ERECTION DIAGRAMS			
DATE: 08-07-25	DRAWN BY: CHD	CHECKED BY: CHD	DRAWING NUMBER:
SCALE: $\frac{3}{16}" = 1'$	APPROVED BY:		J-6799-ED2



Substation Enterprises, Inc.

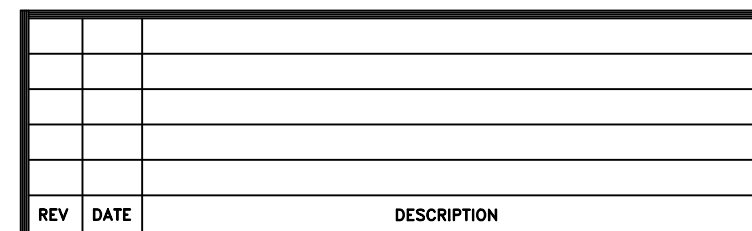
145 Commercial Court, P.O. Box 2010
Alabaster, AL 35007
Phone: (205)685-2755, Fax: (205)685-2753

JACKSONVILLE ELECTRIC AUTHORITY
MERRILL ROAD (69/26kV) SUBSTATION

ERECTION DIAGRAMS

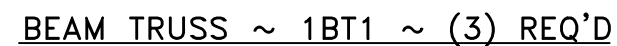
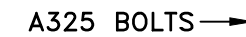
DATE: 08-07-25	DRAWN BY: CHD	CHECKED BY: CHD	DRAWING NUMBER:
SCALE: 3/16" = 1'	APPROVED BY:		J-6799-ED3

REV	DATE	DESCRIPTION



DATE: 08-07-25	DRAWN BY: CHD	CHECKED BY: CHD	DRAWING NUMBER: J-6799-ED4
SCALE: $\frac{3}{16}'' = 1'$	APPROVED BY:		

ITEM	QTY	DESCRIPTION	FT	INCHES	WT
	(3)	FOR ONE 1BT1			
1B1	1	W12X30	26	8	800
1P1	2	BAR 8 X 1/2	1	5	39
2P1	8	BAR 4 X 1/2	0	11 7/8	54
		BLACK WEIGHT			893
		GALV			31
FIELD	16	5/8" GMB W/HN,LW,FW	0	2 1/4	7
		TOTAL WEIGHT			931



1. ALL STEEL HOT-DIP GALVANIZED AFTER FABRICATION.
2. PIECE MARK STAMPED INTO METAL WITH NOT LESS THAN 3/8" INCH CHARACTERS BEFORE GALVANIZING.
3. ALL HOLES 11/16" FOR 5/8" BOLTS UNLESS NOTED.
4. EDGE DISTANCE 1" UNLESS NOTED.
5. ALL STEEL SHAPES ASTM A36 UNLESS NOTED.

145 Commercial Court, P.O. Box 2010
Alabaster, AL 35007
Phone: (205)685-2755, Fax: (205)685-2753

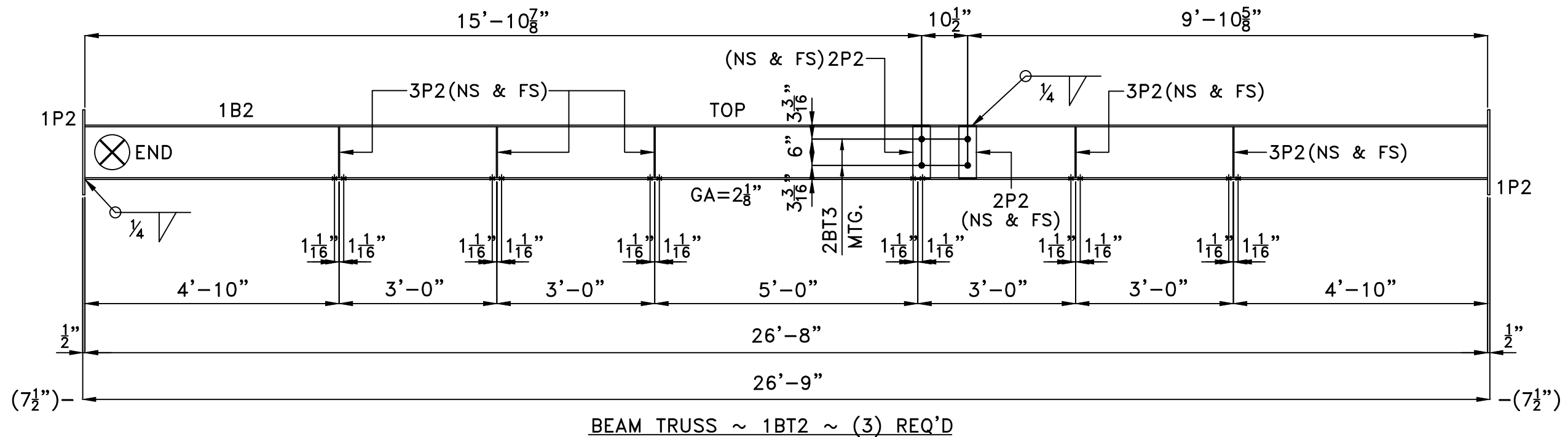
MERRILL ROAD (69/26kV) SUBSTATION

DATE: 08-01-25	DRAWN BY: CHD	CHECKED BY: CHD	DRAWING NUMBER:
----------------	---------------	-----------------	-----------------

SCALE: NONE	APPROVED BY:	J-6799-SD1
-------------	--------------	------------

REV	DATE	DESCRIPTION

ITEM	QTY	DESCRIPTION	FT	INCHES	WT
	(3)	FOR ONE 1BT2			
1B2	1	W12X30	26	8	800
1P2	2	BAR 8 X 1/2	1	5	39
2P2	4	BAR 4 X 1/2	0	11 7/8	27
3P2	10	BAR 3 X 1/4	0	11 3/8	24
		BLACK WEIGHT			890
		GALV			31
FIELD	16	5/8" GMB W/HN,LW,FW	0	2 1/4	7
		TOTAL WEIGHT			928



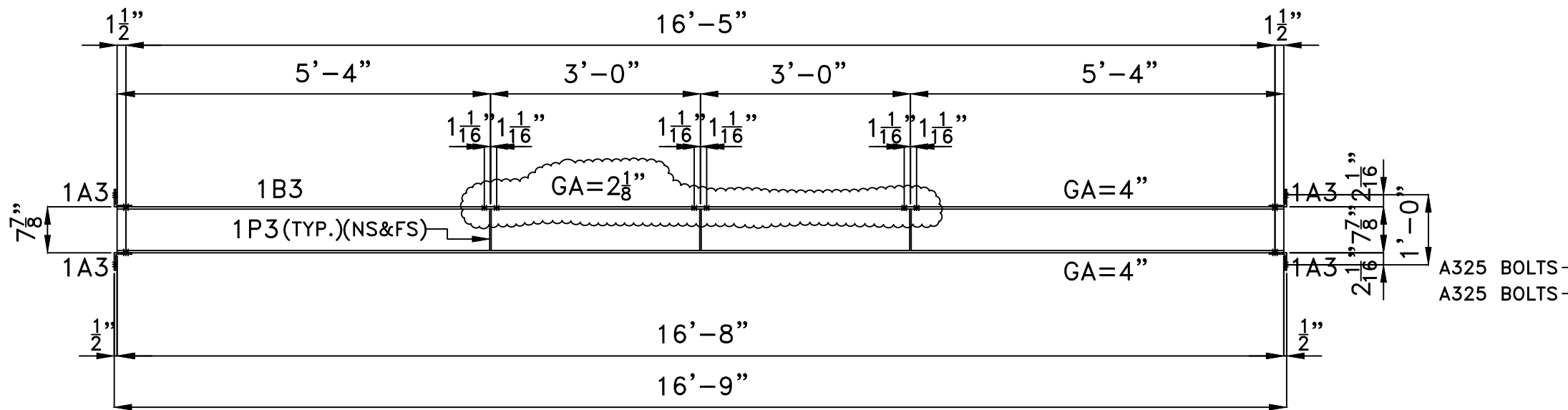
1. ALL STEEL HOT-DIP GALVANIZED AFTER FABRICATION.
2. PIECE MARK STAMPED INTO METAL WITH NOT LESS THAN 3/8" INCH CHARACTERS BEFORE GALVANIZING.
3. ALL HOLES 11/16" FOR 5/8" BOLTS UNLESS NOTED.
4. EDGE DISTANCE 1" UNLESS NOTED.
5. ALL STEEL SHAPES ASTM A36 UNLESS NOTED.

145 Commercial Court, P.O. Box 2010
Alabaster, AL 35007
Phone: (205)685-2755, Fax: (205)685-2753

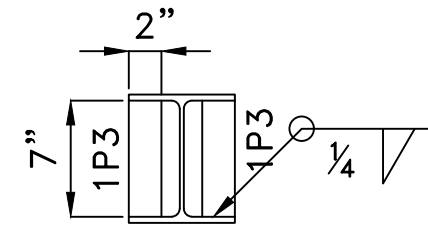
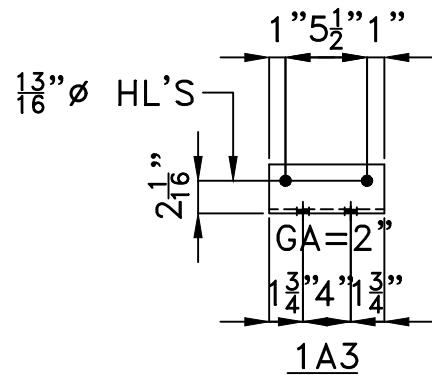
MERRILL ROAD (69/26kV) SUBSTATION

DATE: 08-01-25	DRAWN BY: CHD	CHECKED BY: CHD	DRAWING NUMBER:
----------------	---------------	-----------------	-----------------

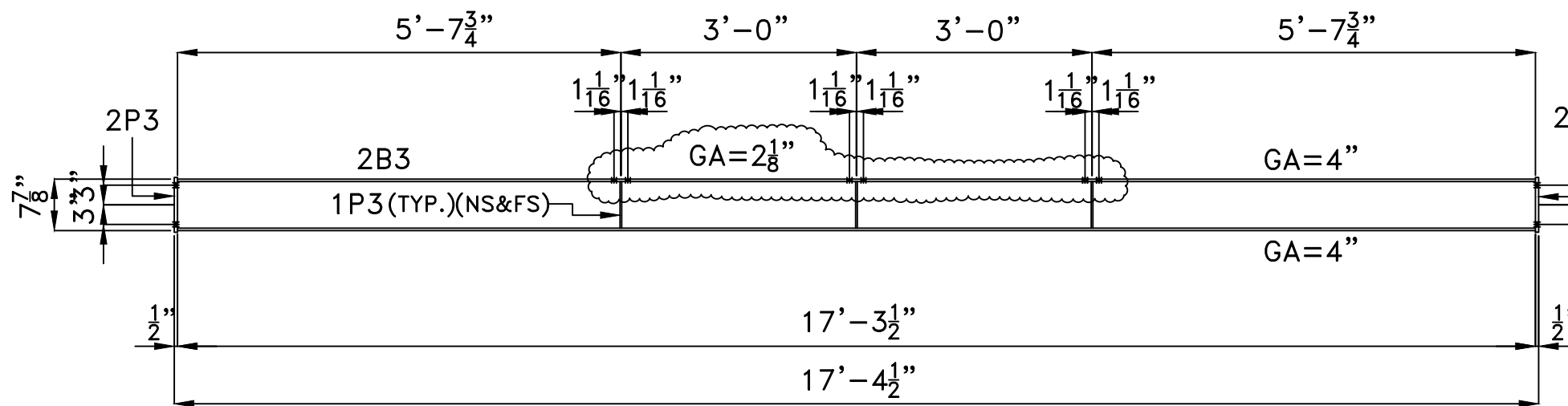
REV	DATE	DESCRIPTION



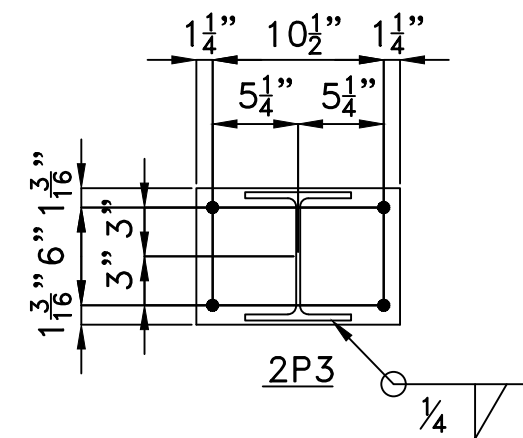
BEAM TRUSS ~ 1BT3 ~ (2) REQ'D



STIFFENER DETAIL



BEAM TRUSS ~ 2BT3 ~ (2) REQ'D



BILL OF MATERIAL

ITEM	QTY	DESCRIPTION	FT	INCHES	WT
	(2)	FOR ONE 1BT3			
1B3	1	W8X24	16	8	400
1A3	4	L3X3X3/8	0	7 1/2	18
1P3	6	BAR 2 X 1/4	0	7	6
		BLACK WEIGHT			424
		GALV			15
FIELD	8	5/8" GMB W/HN,LW	0	2	3
FIELD	8	5/8" GMB W/HN,LW,FW	0	2 1/4	4
		TOTAL WEIGHT			446
	(2)	FOR ONE 2BT3			
2B3	1	W8X24	17	3 1/2	415
1P3	6	BAR 2 X 1/4	0	7	6
2P3	2	PL 1/2 X 13	0	8 3/8	31
		BLACK WEIGHT			452
		GALV			16
FIELD	8	5/8" GMB W/HN,LW,FW	0	2 1/4	4
		TOTAL WEIGHT			472

STEEL NOTES:

1. ALL STEEL HOT-DIP GALVANIZED AFTER FABRICATION.
2. PIECE MARK STAMPED INTO METAL WITH NOT LESS THAN 3/8" INCH CHARACTERS BEFORE GALVANIZING.
3. ALL HOLES 1 1/16" FOR 5/8" BOLTS UNLESS NOTED.
4. EDGE DISTANCE 1" UNLESS NOTED.
5. ALL STEEL SHAPES ASTM A36 UNLESS NOTED.

Substation Enterprises, Inc.

145 Commercial Court, P.O. Box 2010
Alabaster, AL 35007
Phone: (205)685-2755, Fax: (205)685-2753

JACKSONVILLE ELECTRIC AUTHORITY

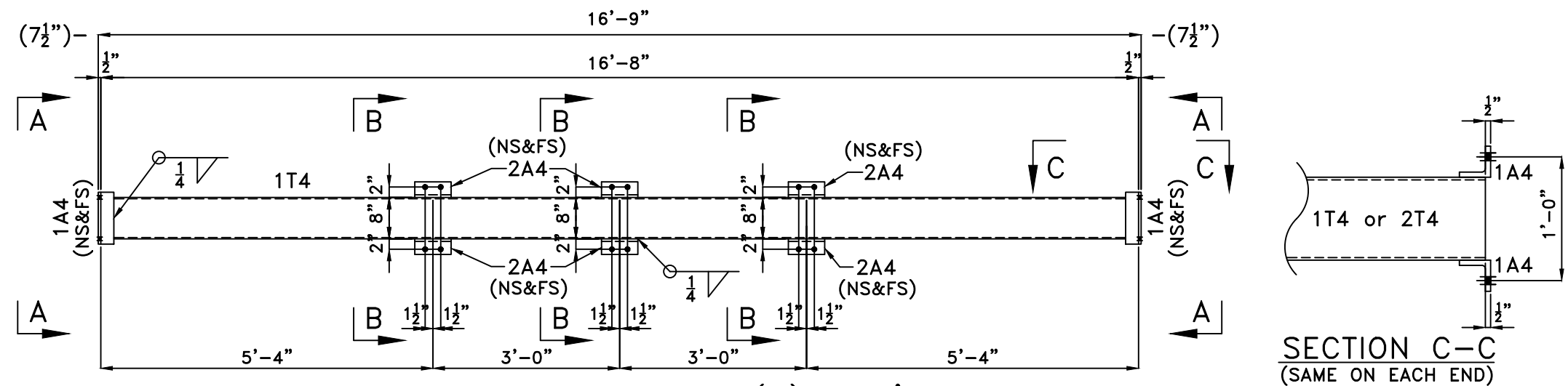
MERRILL ROAD (69/25kV) SUBSTATION

BEAM TRUSSES

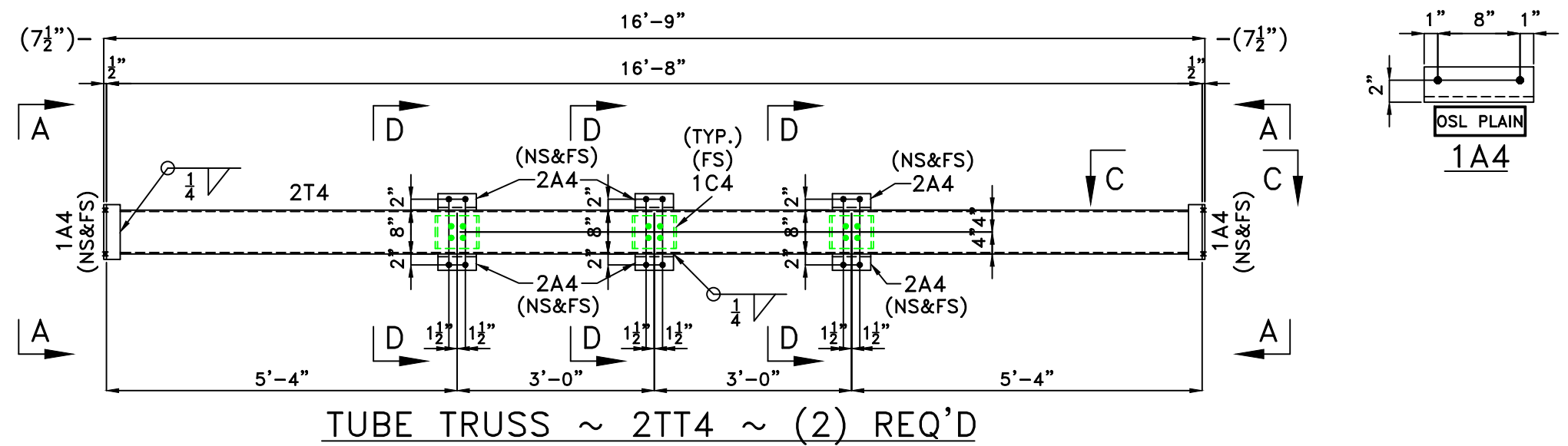
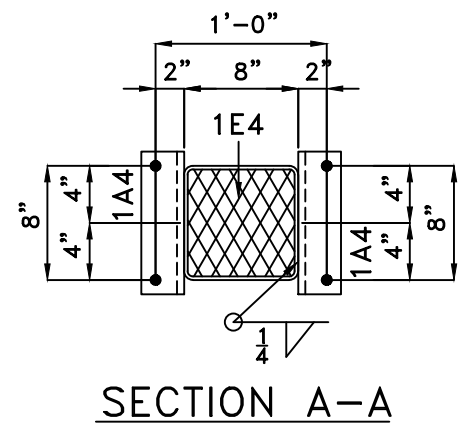
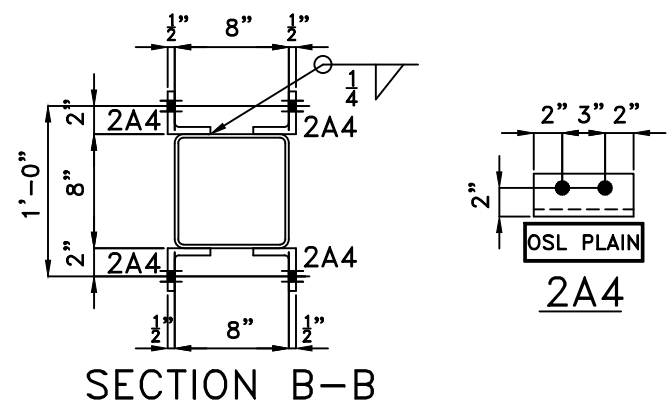
DATE: 08-04-25 DRAWN BY: CHD CHECKED BY: CHD DRAWING NUMBER:

SCALE: NONE APPROVED BY: J-6799-SD3

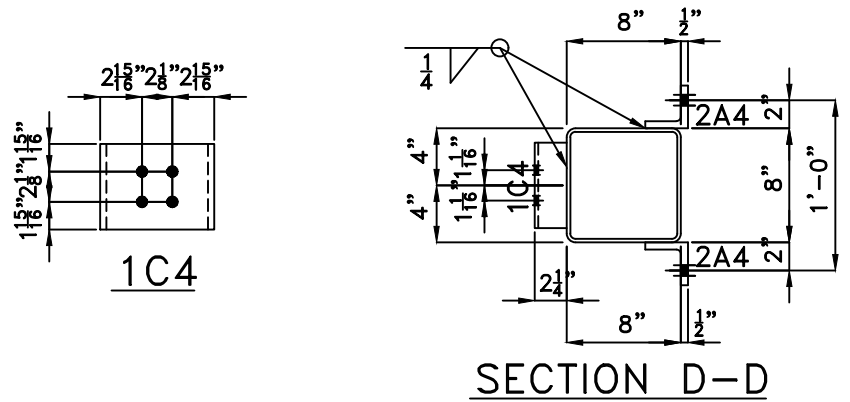
REV	DATE	DESCRIPTION



TUBE TRUSS ~ 1TT4 ~ (2) REQ'D



TUBE TRUSS ~ 2TT4 ~ (2) REQ'D



- STEEL NOTES:**
1. ALL STEEL HOT-DIP GALVANIZED AFTER FABRICATION.
 2. PIECE MARK STAMPED INTO METAL WITH NOT LESS THAN 3/8" INCH CHARACTERS BEFORE GALVANIZING.
 3. ALL HOLES 11/16" FOR 5/8" BOLTS UNLESS NOTED.
 4. EDGE DISTANCE 1" UNLESS NOTED.
 5. ALL STEEL SHAPES ASTM A36 UNLESS NOTED.

BILL OF MATERIAL					
ITEM	QTY	DESCRIPTION	FT	INCHES	WT
	(2)	FOR ONE 1TT4			
1T4	1	HSS8X8X1/4	16	8	430
1A4	4	L3X3X1/2	0	10	31
2A4	12	L3X3X1/2	0	7	66
1E4	2	3/4"-#9 EXP. METAL	0	7 3/8	2
		BLACK WEIGHT			529
		GALV			19
FIELD	8	5/8"GMB W/HN,LW,FW	0	2 1/4	4
		TOTAL WEIGHT			552
	(2)	FOR ONE 2TT4			
2T4	1	HSS8X8X1/4	16	8	430
1C4	3	C8X11.5	0	6	17
1A4	4	L3X3X1/2	0	10	31
2A4	6	L3X3X1/2	0	7	33
1E4	2	3/4"-#9 EXP. METAL	0	7 3/8	2
		BLACK WEIGHT			513
		GALV			18
FIELD	8	5/8"GMB W/HN,LW,FW	0	2 1/4	4
		TOTAL WEIGHT			535

Substation Enterprises, Inc.

145 Commercial Court, P.O. Box 2010
Alabaster, AL 35007
Phone: (205)685-2755, Fax: (205)685-2753

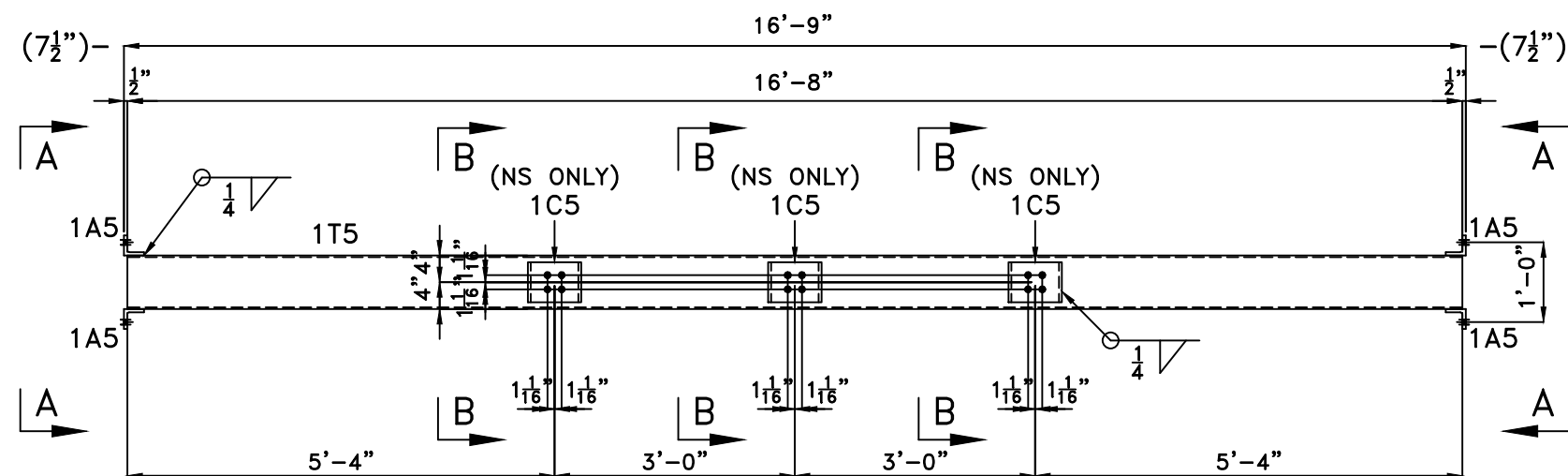
JACKSONVILLE ELECTRIC AUTHORITY
MERRILL ROAD (69/26kV) SUBSTATION

TUBE TRUSSES

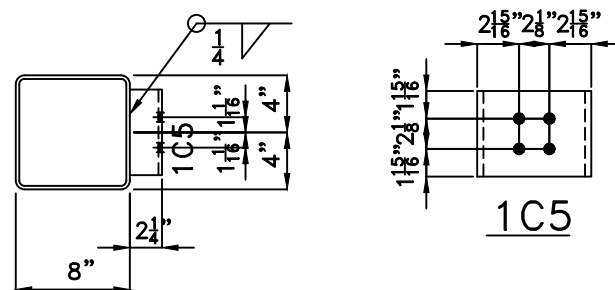
DATE: 08-04-25 DRAWN BY: CHD CHECKED BY: CHD DRAWING NUMBER: J-6799-SD4

SCALE: NONE APPROVED BY:

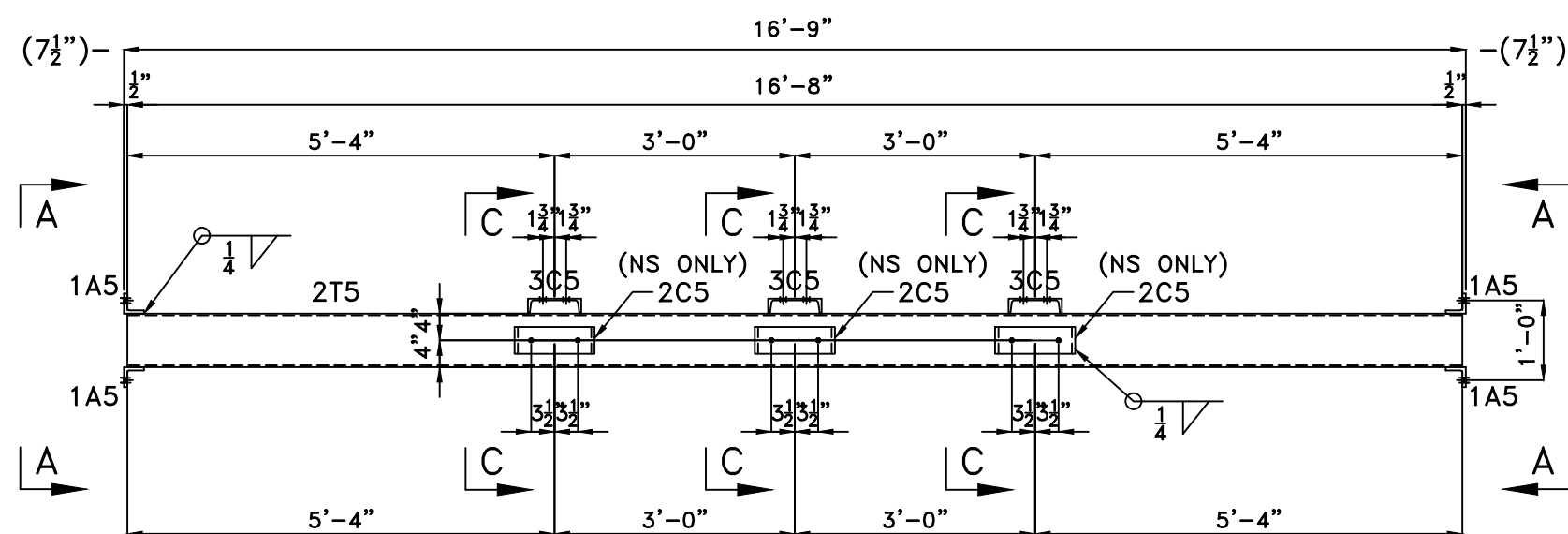
REV	DATE	DESCRIPTION



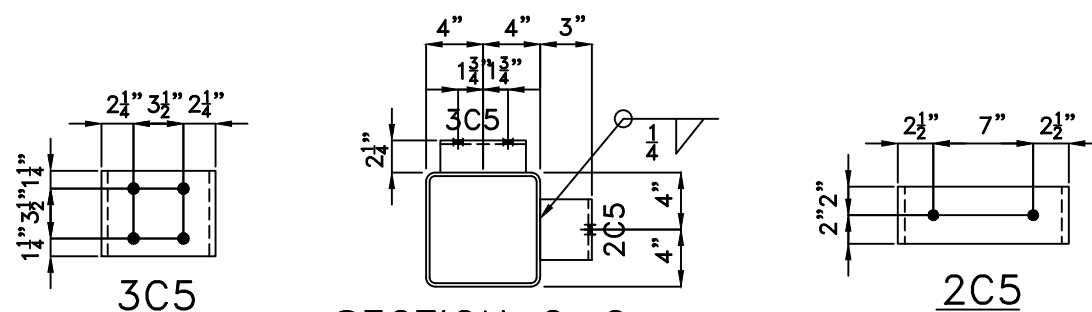
TUBE TRUSS ~ 1TT5 ~ (2) REQ'D



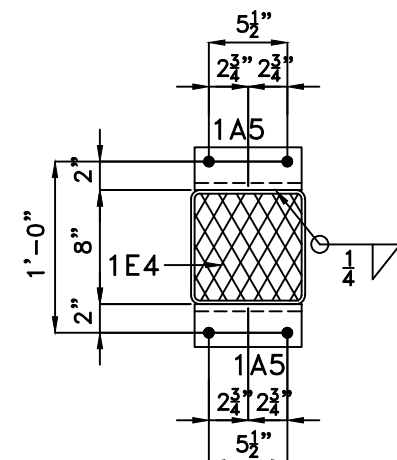
SECTION B-B



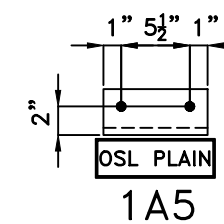
TUBE TRUSS ~ 2TT5 ~ (2) REQ'D



SECTION C-C



SECTION A-A



1A5

A325

A325

- STEEL NOTES:**
1. ALL STEEL HOT-DIP GALVANIZED AFTER FABRICATION.
 2. PIECE MARK STAMPED INTO METAL WITH NOT LESS THAN 3/8" INCH CHARACTERS BEFORE GALVANIZING.
 3. ALL HOLES $\frac{11}{16}$ " FOR $\frac{5}{8}$ " BOLTS UNLESS NOTED.
 4. EDGE DISTANCE 1" UNLESS NOTED.
 5. ALL STEEL SHAPES ASTM A36 UNLESS NOTED.

BILL OF MATERIAL

ITEM	QTY	DESCRIPTION	FT	INCHES	WT
	(2)	FOR ONE 1TT5			
1T5	1	HSS8X8X1/4	16	8	430
1C5	3	C8X11.5	0	6	17
1A5	4	L3X3X1/2	0	7 1/2	24
1E4	2	3/4"-#9 EXP. METAL	0	7 3/8	2
		BLACK WEIGHT			473
		GALV			17
FIELD	8	5/8"GMB W/HN,LW,FW	0	2 1/4	4
		TOTAL WEIGHT			494
	(2)	FOR ONE 2TT5			
2T5	1	HSS8X8X1/4	16	8	430
2C5	3	C12X20.7	0	4	21
3C5	3	C8X11.5	0	6	17
1A5	4	L3X3X1/2	0	7 1/2	24
1E4	2	3/4"-#9 EXP. METAL	0	7 3/8	2
		BLACK WEIGHT			494
		GALV			17
FIELD	8	5/8"GMB W/HN,LW,FW	0	2 1/4	4
		TOTAL WEIGHT			515

Substation Enterprises, Inc.

145 Commercial Court, P.O. Box 2010
Alabaster, AL 35007
Phone: (205)685-2755, Fax: (205)685-2753

JACKSONVILLE ELECTRIC AUTHORITY

MERRILL ROAD (69/26kV) SUBSTATION

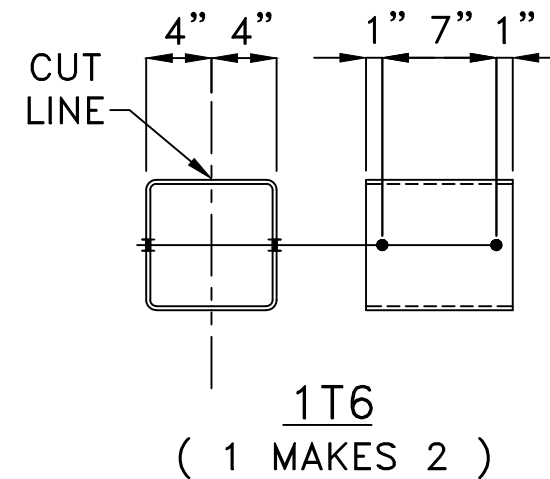
TUBE TRUSSES


DATE: 08-04-25 DRAWN BY: CHD CHECKED BY: CHD DRAWING NUMBER: J-6799-SD5

SCALE: NONE

APPROVED BY:

REV	DATE	DESCRIPTION

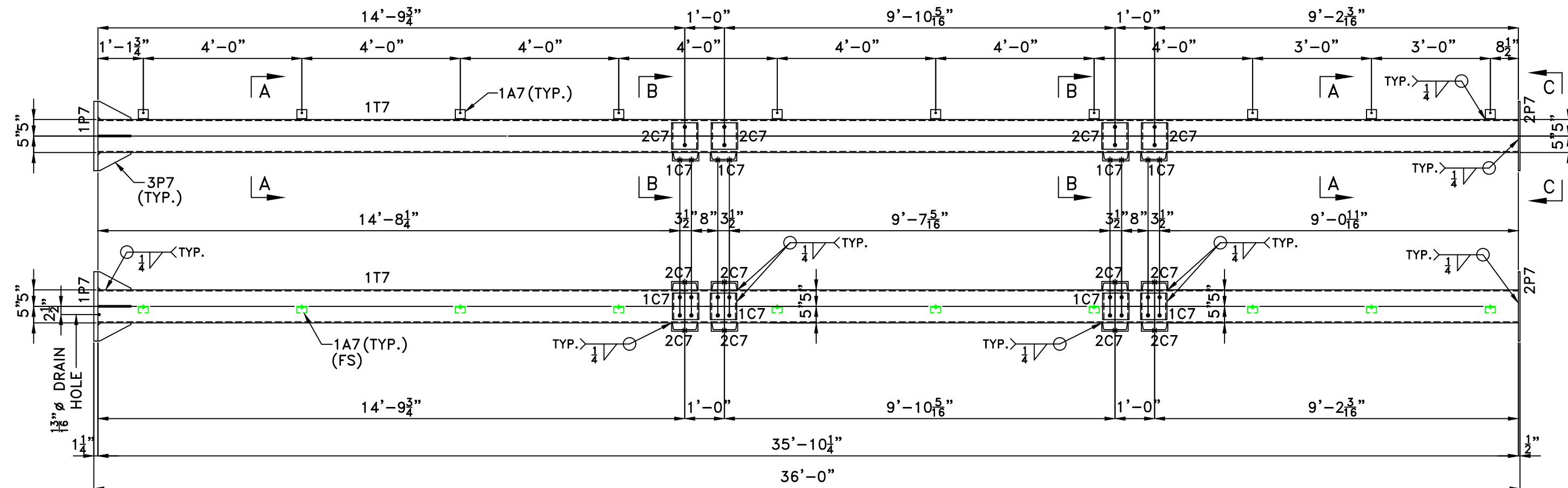


 Substation Enterprises, Inc.			
145 Commercial Court, P.O. Box 2010 Alabaster, AL 35007			
Phone: (205)685-2755, Fax: (205)685-2753			
JACKSONVILLE ELECTRIC AUTHORITY			
MERRILL ROAD (69/26kV) SUBSTATION			
INSULATOR/FUSE MTG.			
DATE: 08-04-25	DRAWN BY: CHD	CHECKED BY: CHD	DRAWING NUMBER:
SCALE: NONE	APPROVED BY:		J-6799-SD6

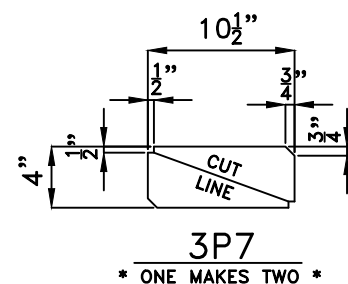
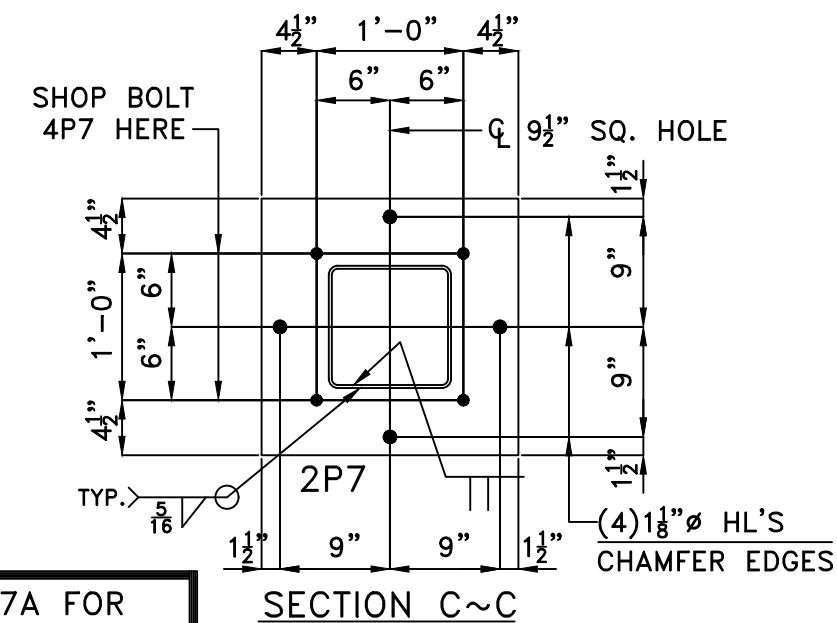
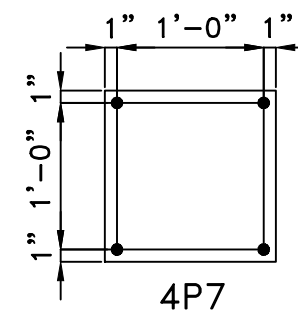
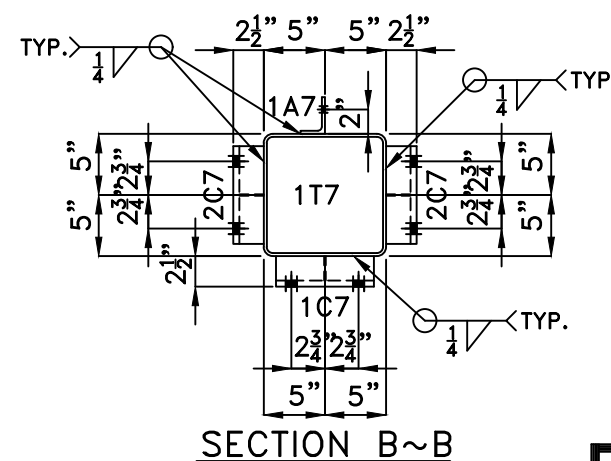
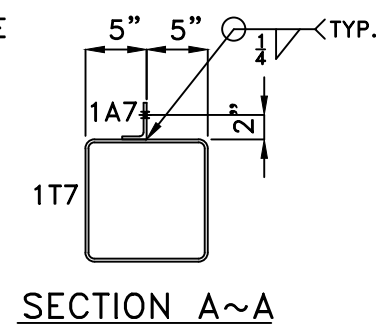
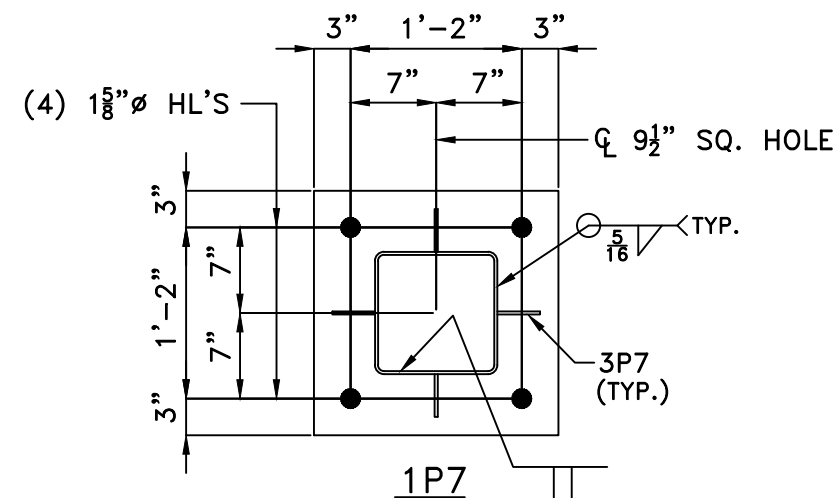
STEEL NOTES:

1. ALL STEEL HOT-DIP GALVANIZED AFTER FABRICATION
2. PIECE MARK STAMPED INTO METAL WITH NOT LESS THAN 3/8" INCH CHARACTERS BEFORE GALVANIZING
3. ALL HOLES 11/16" FOR 5/8" BOLT UNLESS NOTED.
4. EDGE DISTANCE 1" UNLESS NOTED.
5. ALL STEEL SHAPES ASTM A36 UNLESS NOTED.

[illegible]



TUBE COLUMN ~ 1TC7 ~ (1) REQ'D



SEE SHEET -SD7A FOR
MORE STEEL DETAILS & B.O.M.

STEEL NOTES:

1. ALL STEEL HOT-DIP GALVANIZED AFTER FABRICATION.
2. PIECE MARK STAMPED INTO METAL WITH NOT LESS THAN 3/8" INCH CHARACTERS BEFORE GALVANIZING.
3. ALL HOLES $\frac{11}{16}$ " FOR $\frac{5}{8}$ " BOLTS UNLESS NOTED.
4. EDGE DISTANCE 1" UNLESS NOTED.
5. ALL STEEL SHAPES ASTM A36 UNLESS NOTED.

**Substation
Enterprises, Inc.**

145 Commercial Court, P.O. Box 2010
Alabaster, AL 35007
Phone: (205)685-2755, Fax: (205)685-2753

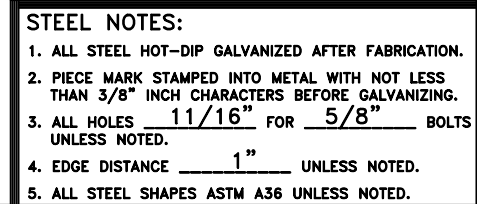
JACKSONVILLE ELECTRIC AUTHORITY

MERRILL ROAD (69/26kV) SUBSTATION

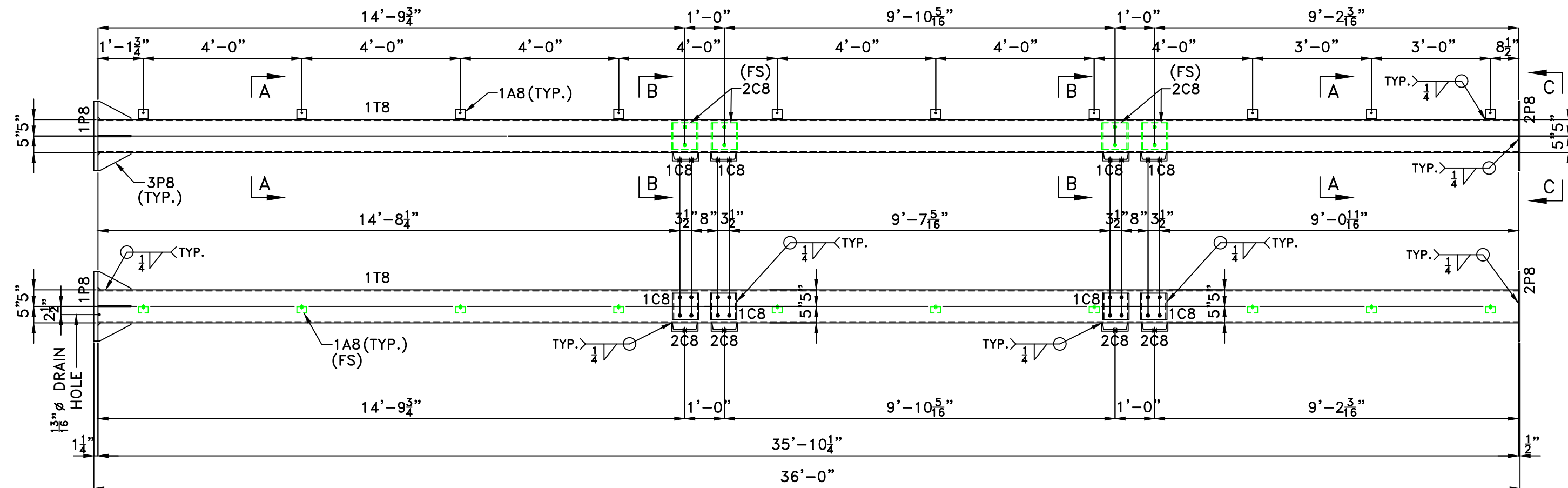
TUBE COLUMN

DATE: 08-05-25 DRAWN BY: CHD CHECKED BY: CHD DRAWING NUMBER:
SCALE: NONE APPROVED BY: J-6799-SD7

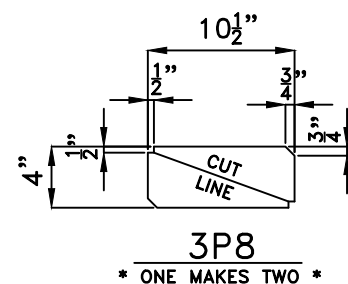
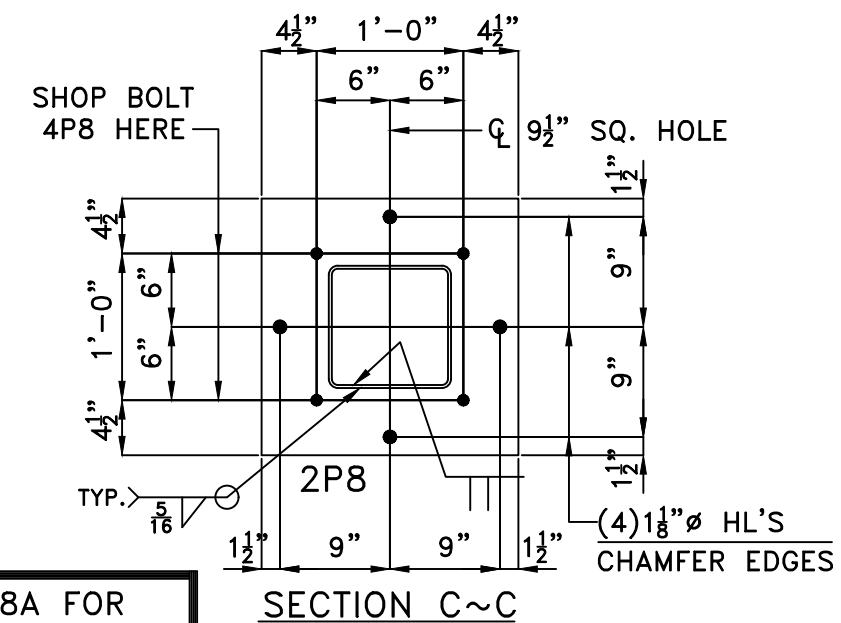
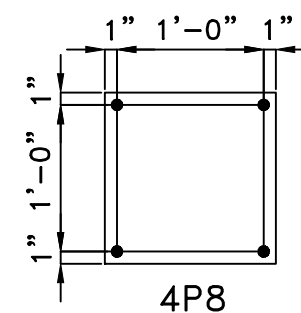
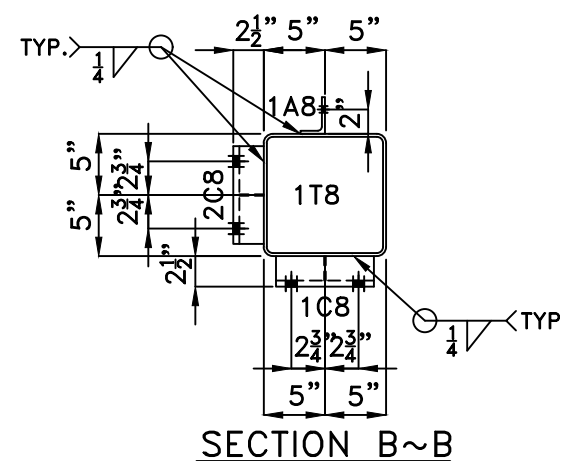
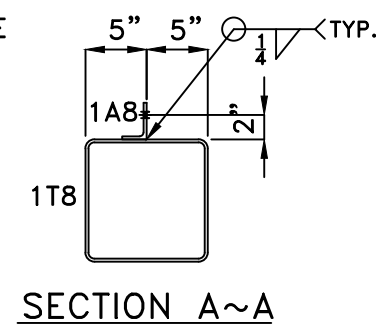
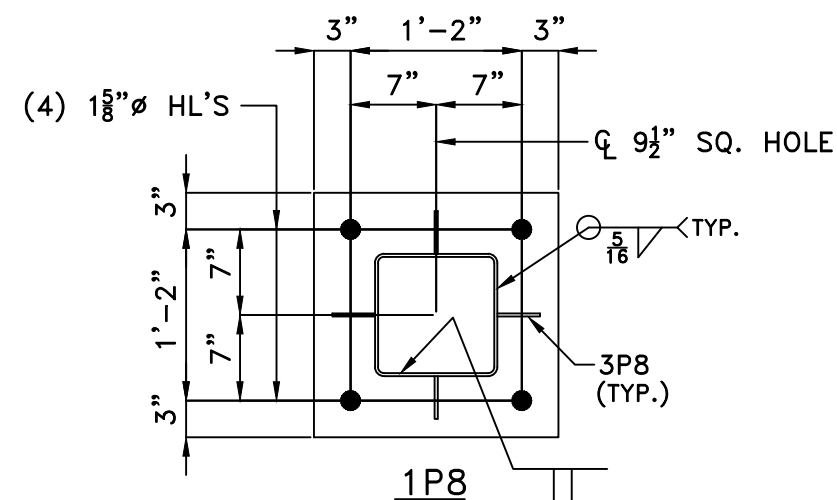
REV	DATE	DESCRIPTION

[illegible]

1	09-11 -25	ADDED STIFFENER PLATE TO CHANNELS
REV	DATE	DESCRIPTION



TUBE COLUMN ~ 1TC8 ~ (1) REQ'D



SEE SHEET -SD8A FOR
MORE STEEL DETAILS & B.O.M.

- STEEL NOTES:**
1. ALL STEEL HOT-DIP GALVANIZED AFTER FABRICATION.
 2. PIECE MARK STAMPED INTO METAL WITH NOT LESS THAN 3/8" INCH CHARACTERS BEFORE GALVANIZING.
 3. ALL HOLES 11/16" FOR 5/8" BOLTS UNLESS NOTED.
 4. EDGE DISTANCE 1" UNLESS NOTED.
 5. ALL STEEL SHAPES ASTM A36 UNLESS NOTED.

**Substation
Enterprises, Inc.**

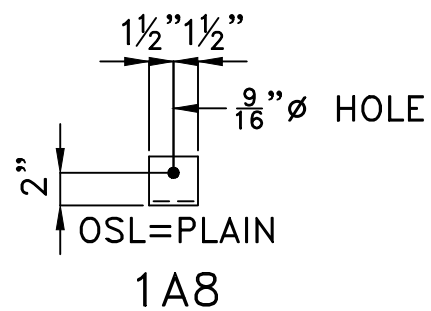
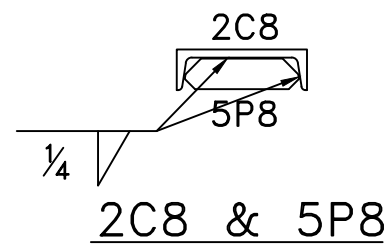
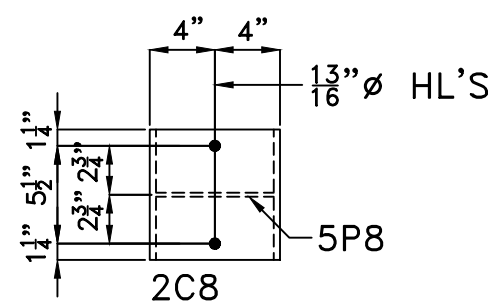
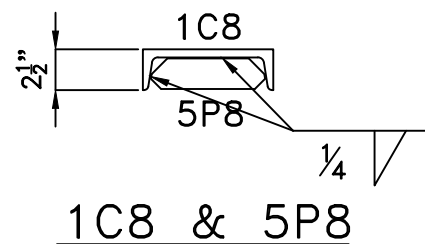
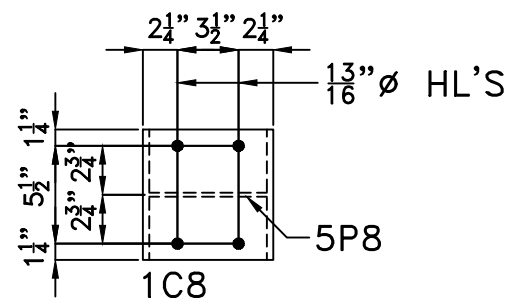
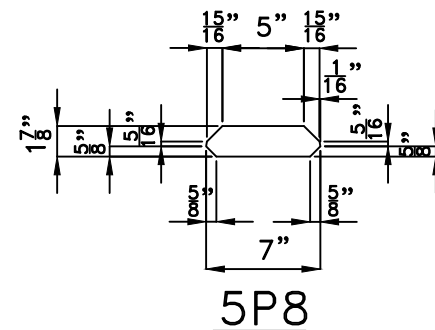
145 Commercial Court, P.O. Box 2010
Alabaster, AL 35007
Phone: (205)685-2755, Fax: (205)685-2753

JACKSONVILLE ELECTRIC AUTHORITY
MERRILL ROAD (69/26kV) SUBSTATION

TUBE COLUMN

DATE: 08-05-25 DRAWN BY: CHD CHECKED BY: CHD DRAWING NUMBER:
SCALE: NONE APPROVED BY: J-6799-SD8

REV	DATE	DESCRIPTION



A325 BOLTS →

[illegible]

STEEL NOTES:

1. ALL STEEL HOT-DIP GALVANIZED AFTER FABRICATION.
2. PIECE MARK STAMPED INTO METAL WITH NOT LESS THAN 3/8" INCH CHARACTERS BEFORE GALVANIZING.
3. ALL HOLES 1 1/16" FOR 5/8" BOLTS UNLESS NOTED.
4. EDGE DISTANCE 1" UNLESS NOTED.
5. ALL STEEL SHAPES ASTM A36 UNLESS NOTED.

Substation Enterprises, Inc.

145 Commercial Court, P.O. Box 2010
Alabaster, AL 35007
Phone: (205)685-2755, Fax: (205)685-2753

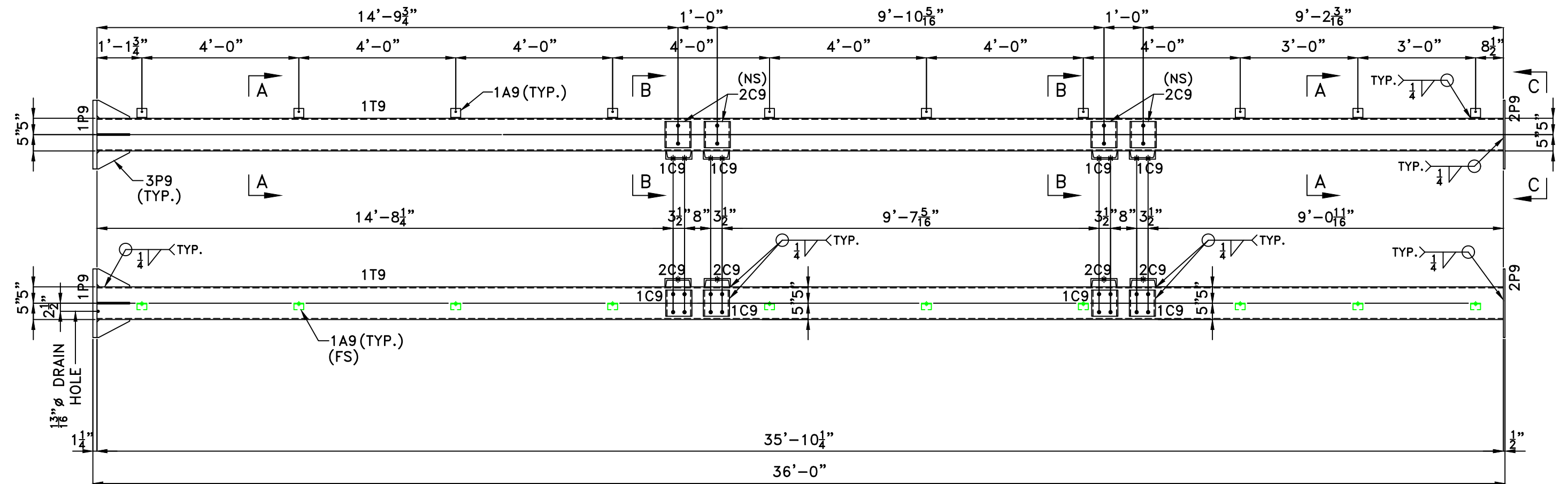
JACKSONVILLE ELECTRIC AUTHORITY

MERRILL ROAD (69/26kV) SUBSTATION

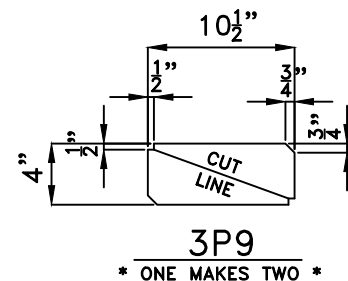
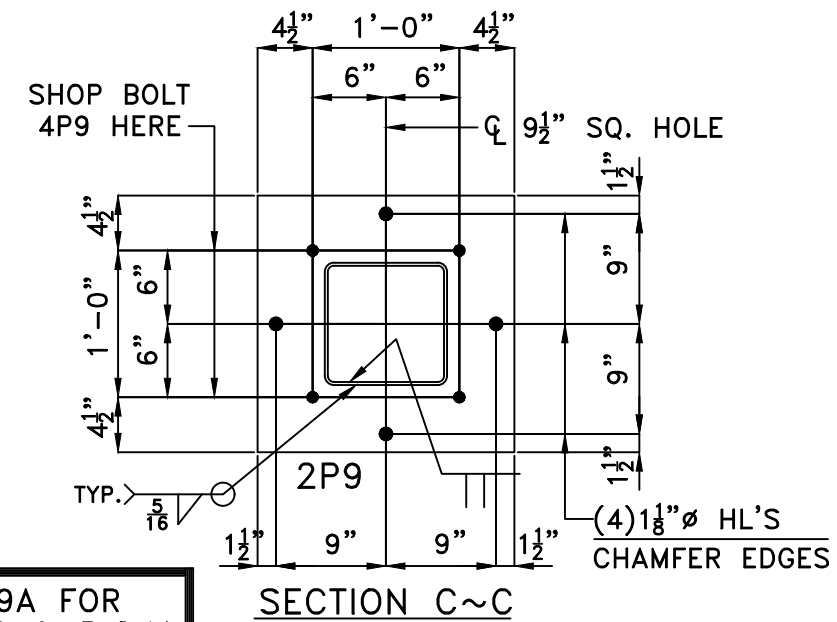
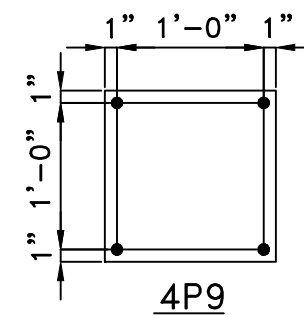
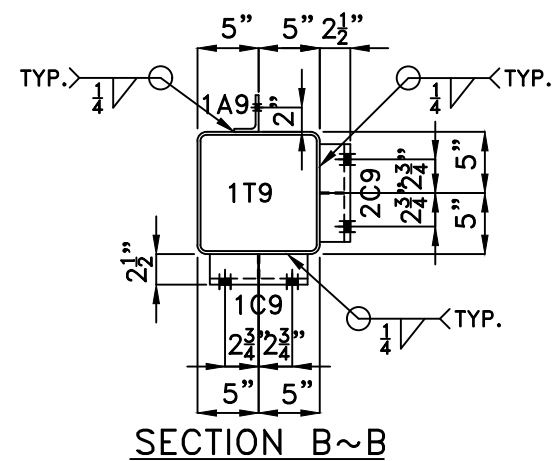
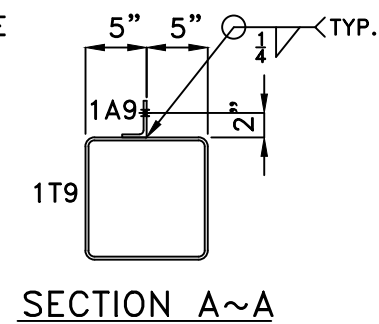
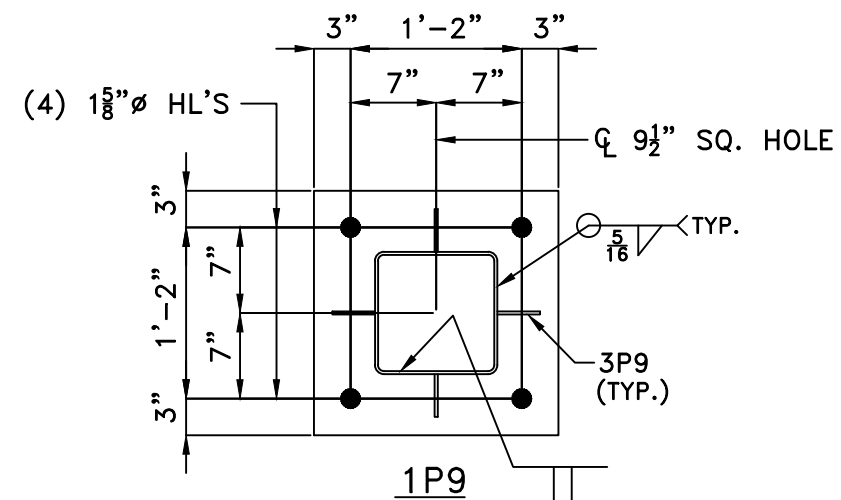
TUBE COLUMN STEEL DETAILS CONTINUED

DATE: 08-05-25	DRAWN BY: CHD	CHECKED BY: CHD	DRAWING NUMBER:
SCALE: NONE	APPROVED BY:		J-6799-SD8A

1	09-11 -25	ADDED STIFFENER PLATE TO CHANNELS
REV	DATE	DESCRIPTION



TUBE COLUMN ~ 1TC9 ~ (1) REQ'D



SEE SHEET -SD9A FOR
MORE STEEL DETAILS & B.O.M.

STEEL NOTES:

1. ALL STEEL HOT-DIP GALVANIZED AFTER FABRICATION.
2. PIECE MARK STAMPED INTO METAL WITH NOT LESS THAN 3/8" INCH CHARACTERS BEFORE GALVANIZING.
3. ALL HOLES 11/16" FOR 5/8" BOLTS UNLESS NOTED.
4. EDGE DISTANCE 1" UNLESS NOTED.
5. ALL STEEL SHAPES ASTM A36 UNLESS NOTED.

**Substation
Enterprises, Inc.**

145 Commercial Court, P.O. Box 2010
Alabaster, AL 35007
Phone: (205)685-2755, Fax: (205)685-2753

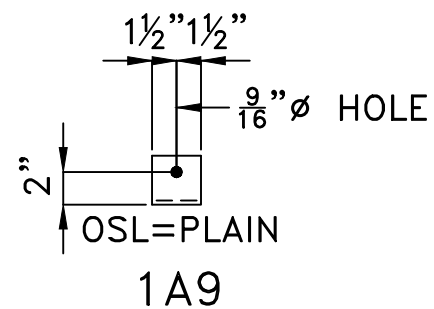
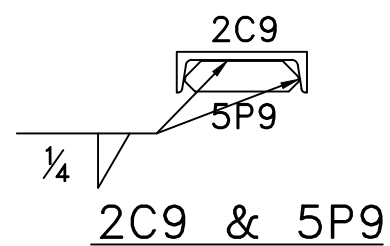
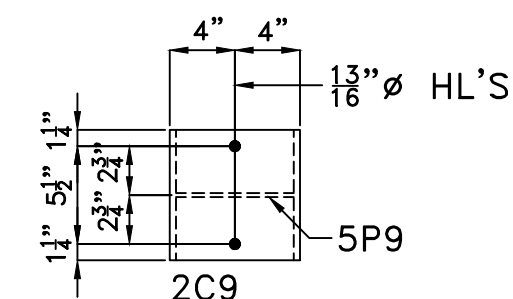
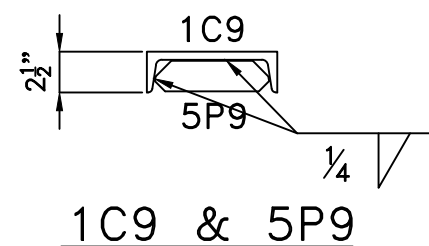
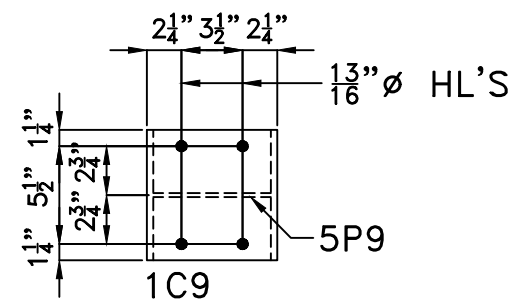
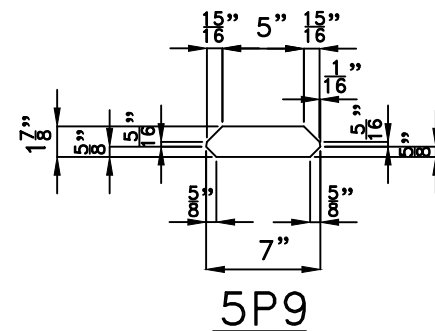
JACKSONVILLE ELECTRIC AUTHORITY

MERRILL ROAD (69/26kV) SUBSTATION

TUBE COLUMN

DATE: 08-05-25 DRAWN BY: CHD CHECKED BY: CHD DRAWING NUMBER:
SCALE: NONE APPROVED BY: J-6799-SD9

REV	DATE	DESCRIPTION



A325 BOLTS →

BILL OF MATERIAL

[illegible]

STEEL NOTES:

1. ALL STEEL HOT-DIP GALVANIZED AFTER FABRICATION.
2. PIECE MARK STAMPED INTO METAL WITH NOT LESS THAN 3/8" INCH CHARACTERS BEFORE GALVANIZING.
3. ALL HOLES 11/16" FOR 5/8" BOLTS UNLESS NOTED.
4. EDGE DISTANCE 1" UNLESS NOTED.
5. ALL STEEL SHAPES ASTM A36 UNLESS NOTED.

Substation Enterprises, Inc.

145 Commercial Court, P.O. Box 2010
Alabaster, AL 35007
Phone: (205)685-2755, Fax: (205)685-2753

JACKSONVILLE ELECTRIC AUTHORITY

MERRILL ROAD (69/26kV) SUBSTATION

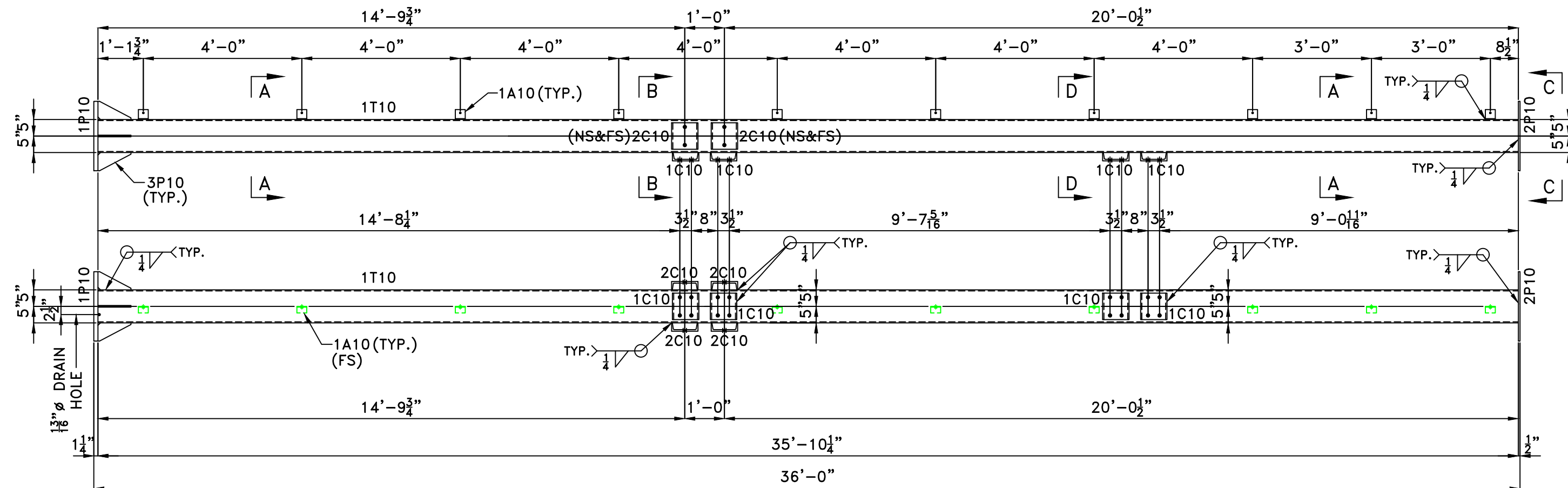
TUBE COLUMN STEEL DETAILS CONTINUED

DATE: 08-05-25	DRAWN BY: CHD	CHECKED BY: CHD	DRAWING NUMBER:
SCALE: NONE	APPROVED BY:		J-6799-SD9A

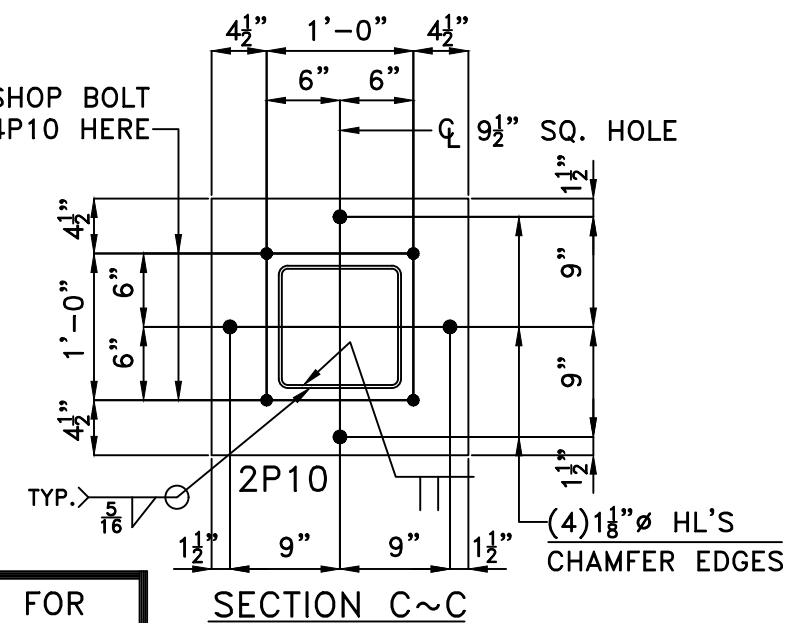
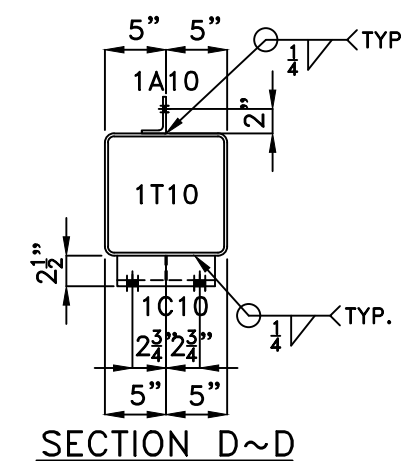
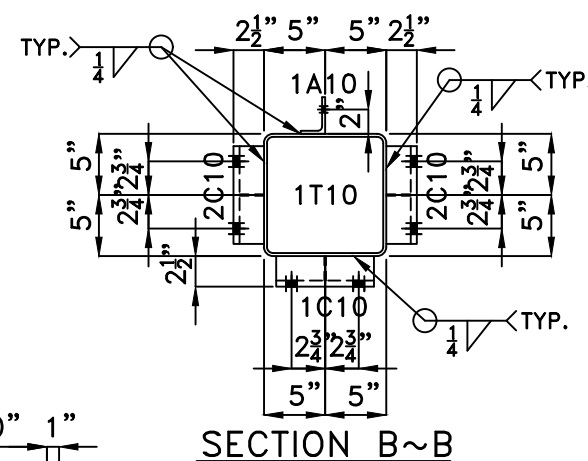
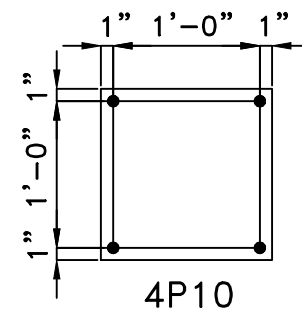
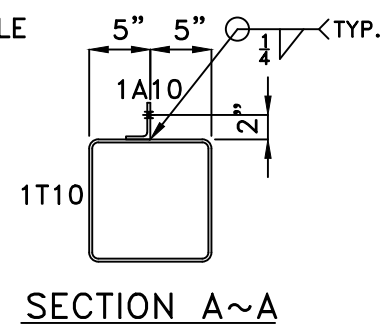
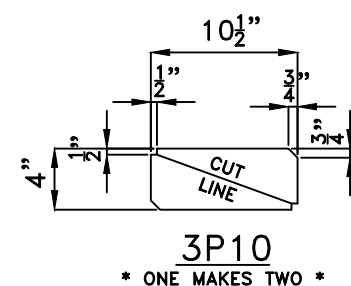
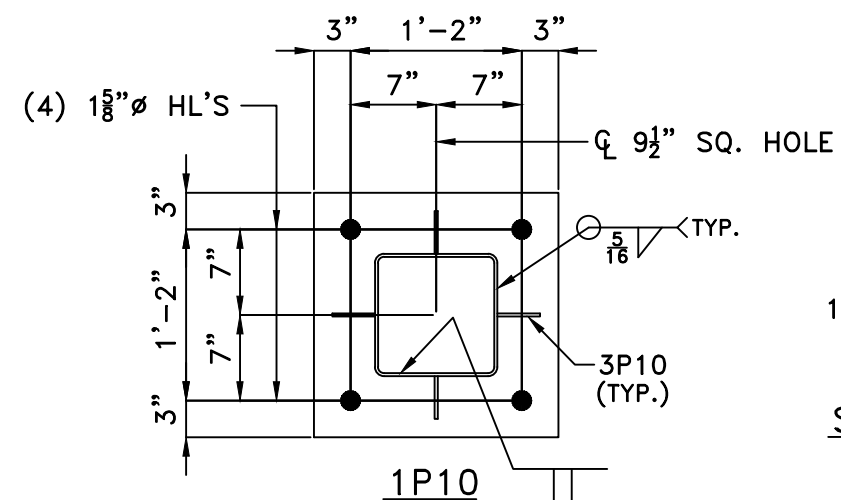
SCALE: NONE

APPROVED BY:

1	09-11 -25	ADDED STIFFENER PLATE TO CHANNELS
REV	DATE	DESCRIPTION



TUBE COLUMN ~ 1TC10 ~ (1) REQ'D



SEE SHEET -SD10A FOR
MORE STEEL DETAILS & B.O.M.

STEEL NOTES:

1. ALL STEEL HOT-DIP GALVANIZED AFTER FABRICATION.
2. PIECE MARK STAMPED INTO METAL WITH NOT LESS THAN 3/8" INCH CHARACTERS BEFORE GALVANIZING.
3. ALL HOLES $\frac{11}{16}$ " FOR $\frac{5}{8}$ " BOLTS UNLESS NOTED.
4. EDGE DISTANCE 1" UNLESS NOTED.
5. ALL STEEL SHAPES ASTM A36 UNLESS NOTED.

**Substation
Enterprises, Inc.**

145 Commercial Court, P.O. Box 2010
Alabaster, AL 35007
Phone: (205)685-2755, Fax: (205)685-2753

JACKSONVILLE ELECTRIC AUTHORITY

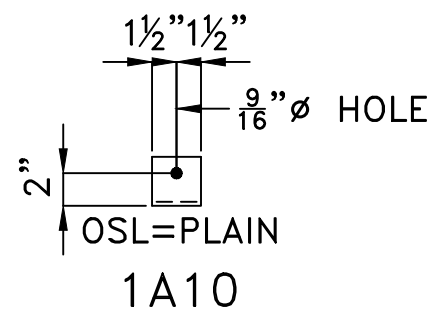
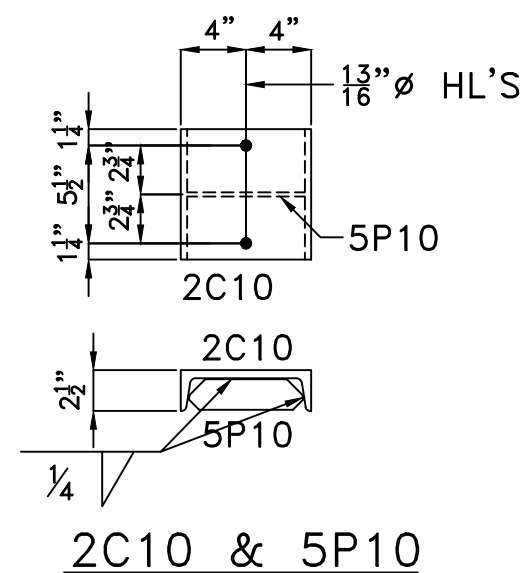
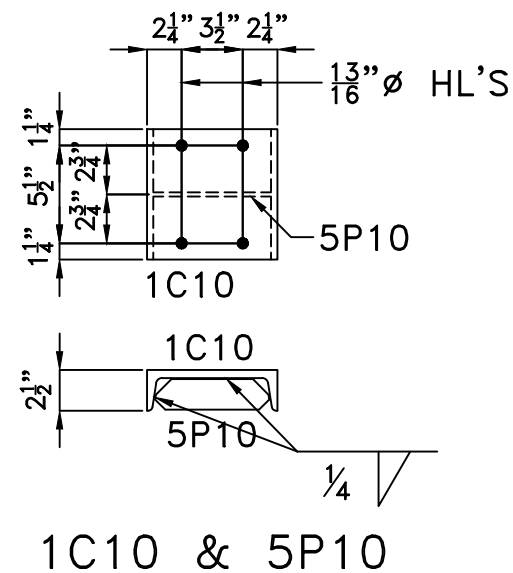
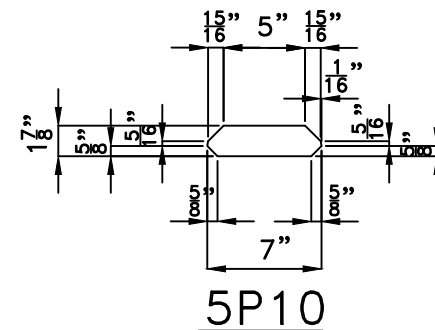
MERRILL ROAD (69/26kV) SUBSTATION

TUBE COLUMN

DATE: 08-05-25 DRAWN BY: CHD CHECKED BY: CHD DRAWING NUMBER:

SCALE: NONE APPROVED BY: J-6799-SD10

REV	DATE	DESCRIPTION



A325 BOLTS →

[illegible]

STEEL NOTES:

1. ALL STEEL HOT-DIP GALVANIZED AFTER FABRICATION.
2. PIECE MARK STAMPED INTO METAL WITH NOT LESS THAN 3/8" INCH CHARACTERS BEFORE GALVANIZING.
3. ALL HOLES 1 1/16" FOR 5/8" BOLTS UNLESS NOTED.
4. EDGE DISTANCE 1" UNLESS NOTED.
5. ALL STEEL SHAPES ASTM A36 UNLESS NOTED.

Substation Enterprises, Inc.

145 Commercial Court, P.O. Box 2010
Alabaster, AL 35007
Phone: (205)685-2755, Fax: (205)685-2753

JACKSONVILLE ELECTRIC AUTHORITY

MERRILL ROAD (69/26kV) SUBSTATION

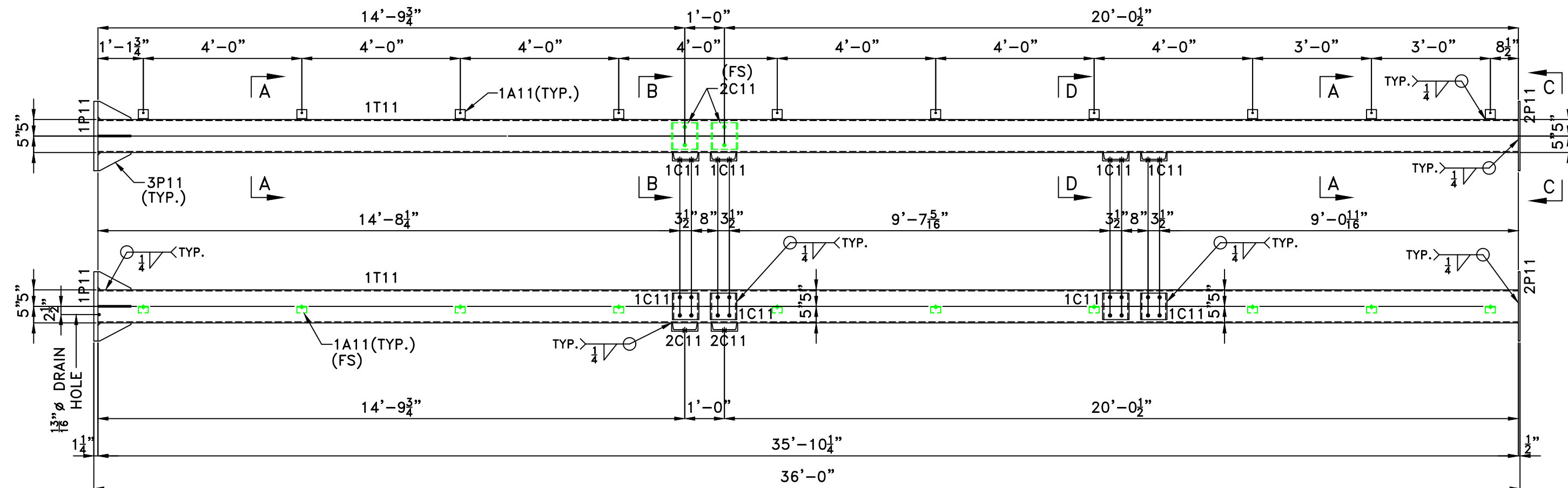
TUBE COLUMN STEEL DETAILS CONTINUED

DATE: 08-05-25	DRAWN BY: CHD	CHECKED BY: CHD	DRAWING NUMBER:
SCALE: NONE	APPROVED BY:		J-6799-SD10A

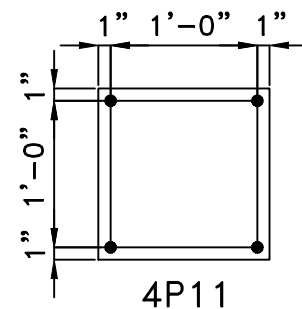
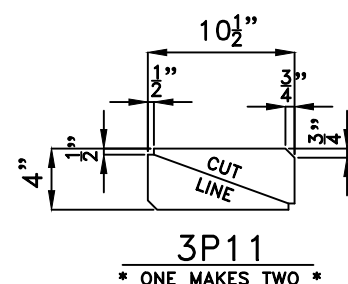
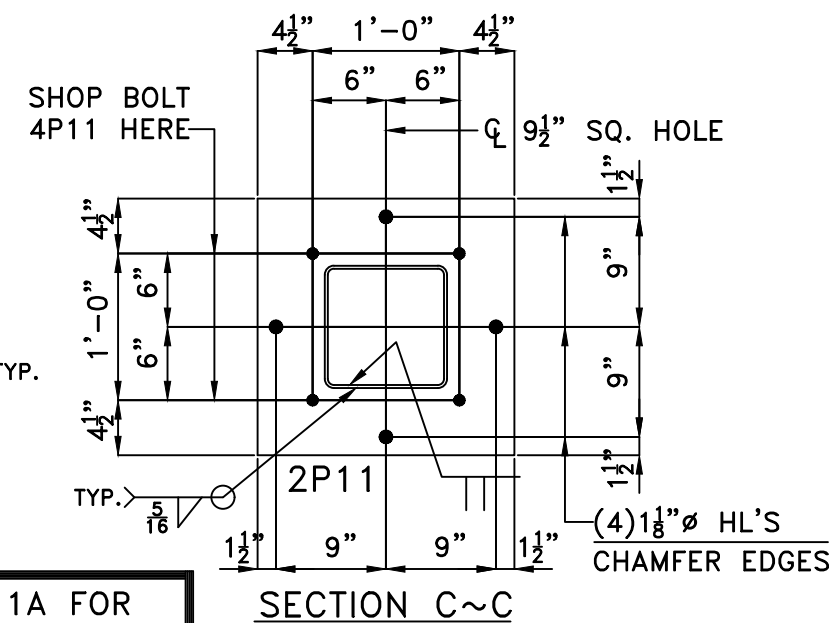
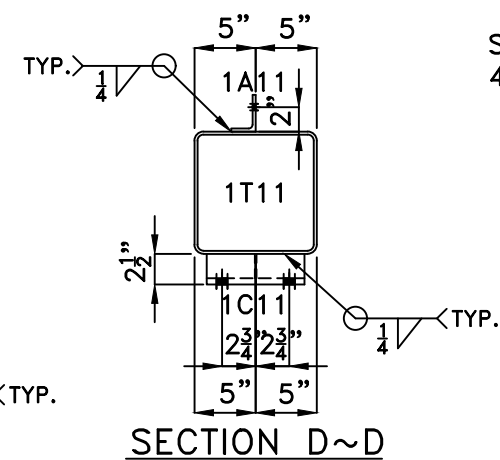
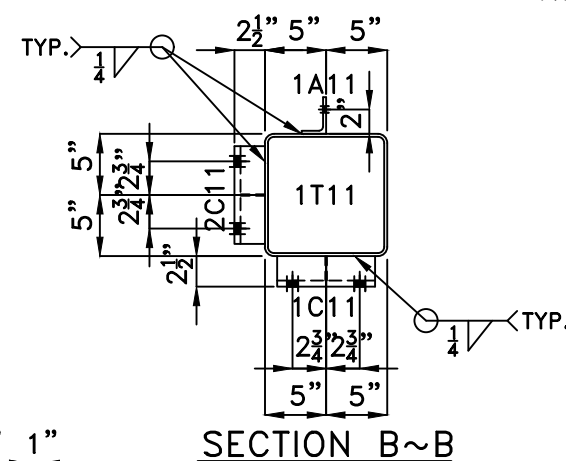
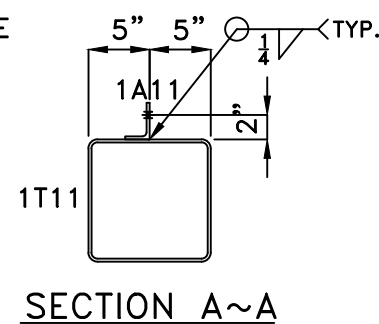
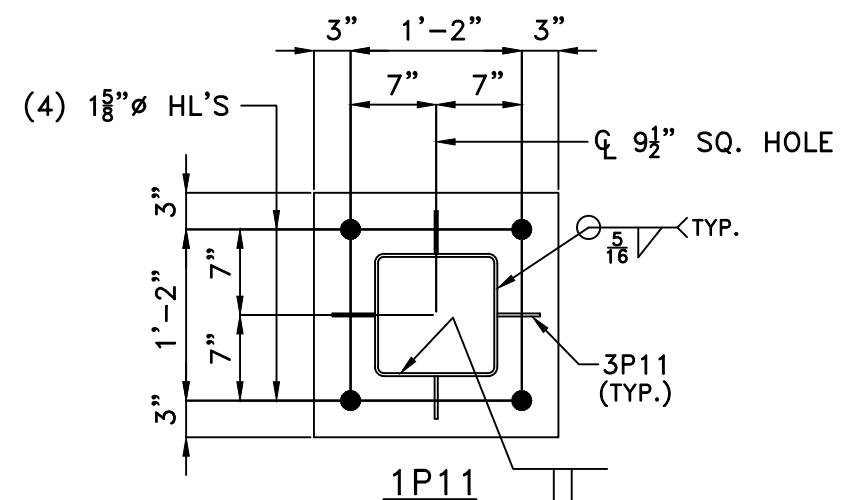
SCALE: NONE

APPROVED BY:

1	09-11 -25	ADDED STIFFENER PLATE TO CHANNELS
REV	DATE	DESCRIPTION



TUBE COLUMN ~ 1TC11 ~ (1) REQ'D



SEE SHEET -SD11A FOR
MORE STEEL DETAILS & B.O.M.

STEEL NOTES:

1. ALL STEEL HOT-DIP GALVANIZED AFTER FABRICATION.
2. PIECE MARK STAMPED INTO METAL WITH NOT LESS THAN 3/8" INCH CHARACTERS BEFORE GALVANIZING.
3. ALL HOLES $\frac{11}{16}$ " FOR $\frac{5}{8}$ " BOLTS UNLESS NOTED.
4. EDGE DISTANCE 1" UNLESS NOTED.
5. ALL STEEL SHAPES ASTM A36 UNLESS NOTED.

**Substation
Enterprises, Inc.**

145 Commercial Court, P.O. Box 2010
Alabaster, AL 35007
Phone: (205)685-2755, Fax: (205)685-2753

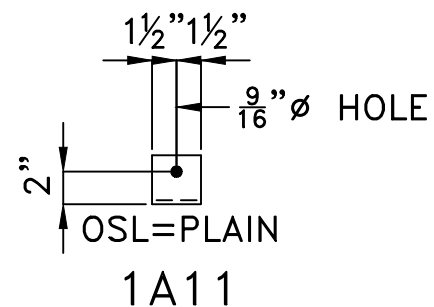
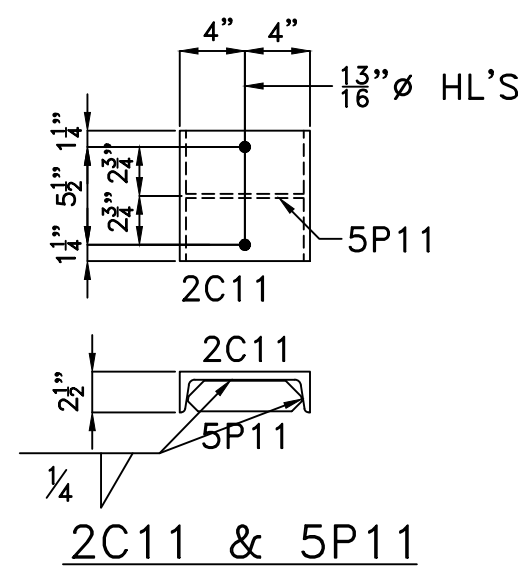
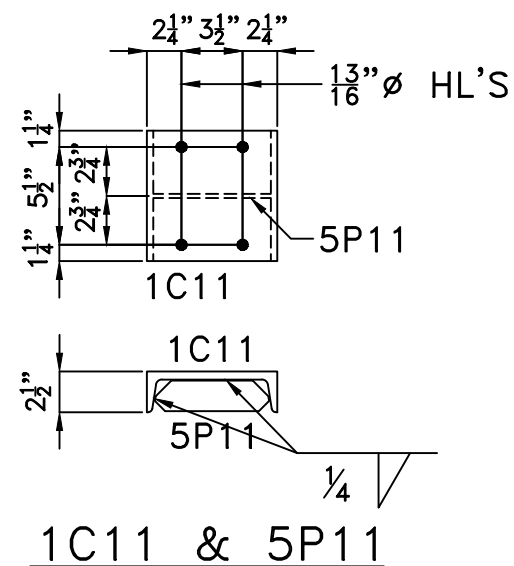
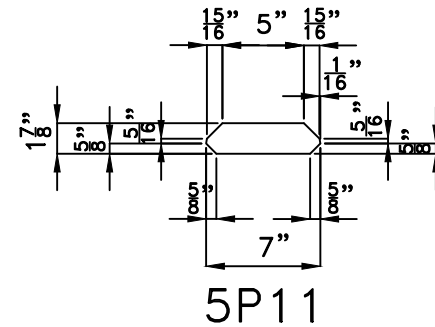
JACKSONVILLE ELECTRIC AUTHORITY

MERRILL ROAD (69/26kV) SUBSTATION

TUBE COLUMN

DATE: 08-05-25 DRAWN BY: CHD CHECKED BY: CHD DRAWING NUMBER:
SCALE: NONE APPROVED BY: J-6799-SD11

REV	DATE	DESCRIPTION



A325 BOLTS →

[illegible]

STEEL NOTES:

1. ALL STEEL HOT-DIP GALVANIZED AFTER FABRICATION.
2. PIECE MARK STAMPED INTO METAL WITH NOT LESS THAN 3/8" INCH CHARACTERS BEFORE GALVANIZING.
3. ALL HOLES 1 1/16" FOR 5/8" BOLTS UNLESS NOTED.
4. EDGE DISTANCE 1" UNLESS NOTED.
5. ALL STEEL SHAPES ASTM A36 UNLESS NOTED.

Substation Enterprises, Inc.

145 Commercial Court, P.O. Box 2010
Alabaster, AL 35007
Phone: (205)685-2755, Fax: (205)685-2753

JACKSONVILLE ELECTRIC AUTHORITY

MERRILL ROAD (69/26kV) SUBSTATION

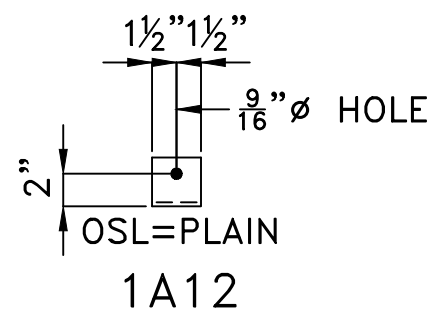
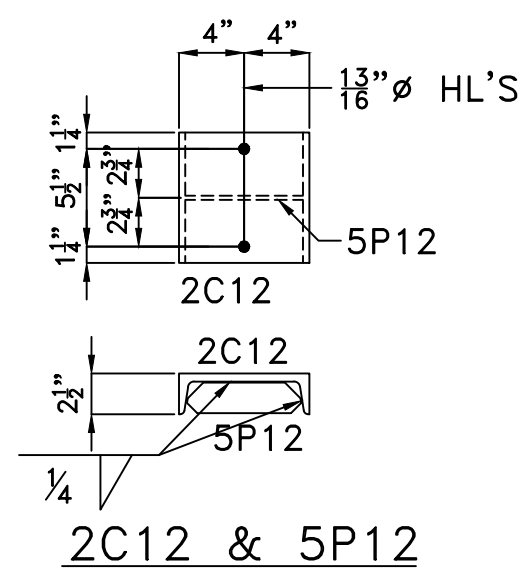
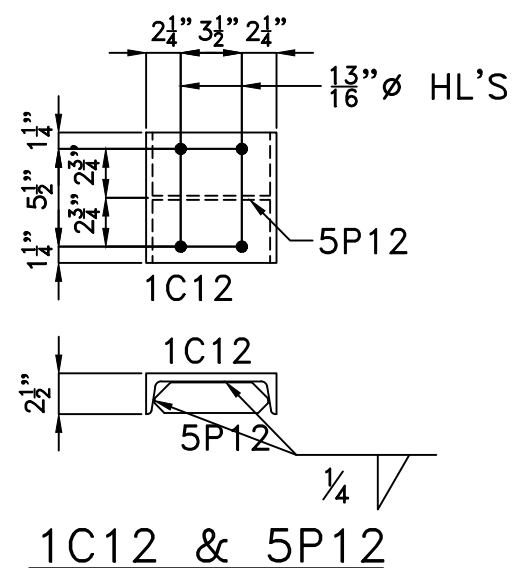
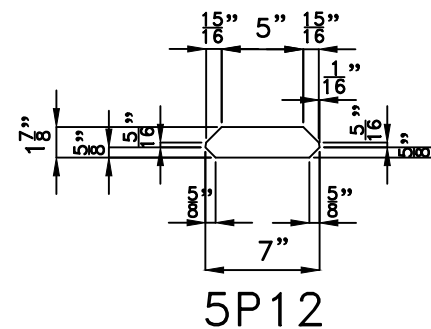
TUBE COLUMN STEEL DETAILS CONTINUED

DATE: 08-05-25	DRAWN BY: CHD	CHECKED BY: CHD	DRAWING NUMBER:
SCALE: NONE	APPROVED BY:		J-6799-SD11A

SCALE: NONE

APPROVED BY:

REV	DATE	DESCRIPTION
1	09-11-25	ADDED STIFFENER PLATE TO CHANNELS

[illegible]

A325 BOLTS →

STEEL NOTES:

1. ALL STEEL HOT-DIP GALVANIZED AFTER FABRICATION.
2. PIECE MARK STAMPED INTO METAL WITH NOT LESS THAN 3/8" INCH CHARACTERS BEFORE GALVANIZING.
3. ALL HOLES 11/16" FOR 5/8" BOLTS UNLESS NOTED.
4. EDGE DISTANCE 1" UNLESS NOTED.
5. ALL STEEL SHAPES ASTM A36 UNLESS NOTED.

Substation Enterprises, Inc.

145 Commercial Court, P.O. Box 2010
Alabaster, AL 35007
Phone: (205)685-2755, Fax: (205)685-2753

JACKSONVILLE ELECTRIC AUTHORITY

MERRILL ROAD (69/26kV) SUBSTATION

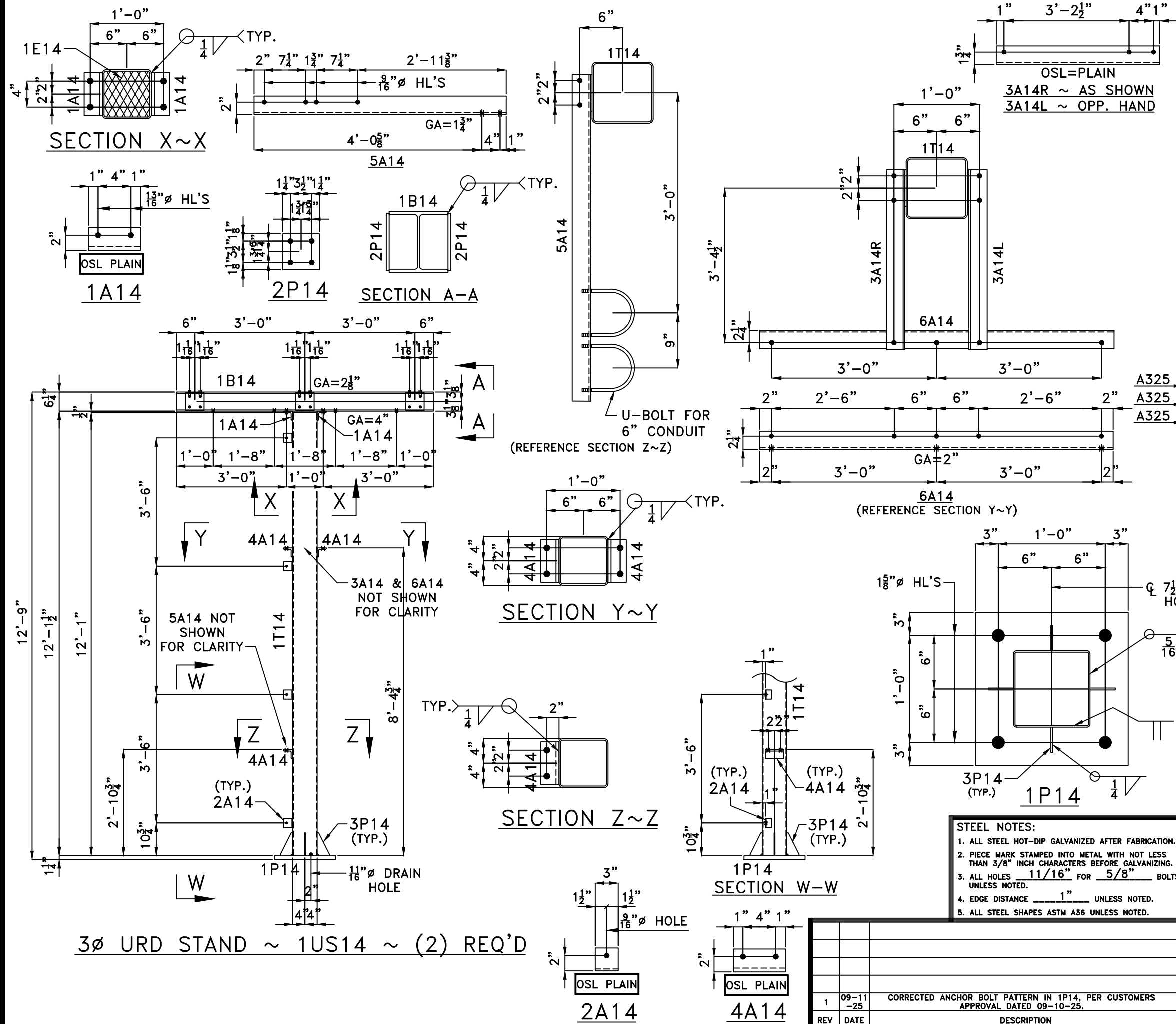
TUBE COLUMN STEEL DETAILS CONTINUED

DATE: 08-05-25	DRAWN BY: CHD	CHECKED BY: CHD	DRAWING NUMBER: J-6799-SD12A
SCALE: NONE	APPROVED BY:		

SCALE: NONE

APPROVED BY:

1	09-11 -25	ADDED STIFFENER PLATE TO CHANNELS
REV	DATE	DESCRIPTION



BILL OF MATERIAL					
ITEM	QTY	DESCRIPTION	FT	INCHES	WT
	(2)	FOR ONE 1US14			
1T14	1	HSS8X8X1/4	12	1	312
1B14	1	W6X20	7	0	140
1A14	2	L3X3X1/2	0	6	9
2A14	4	L3X2X1/4	0	3	4
3A14R	1	L3X3X1/4	3	8 1/2	18
3A14L	1	L3X3X1/4	3	8 1/2	18
4A14	3	L3X3X1/2	0	6	14
5A14	1	L3X3X1/4	4	5 5/8	22
6A14	1	L3X3X1/4	6	4	31
1P14	1	PL 1-1/4 X 18	1	6	115
2P14	6	BAR 6 X 3/8	0	5 3/4	22
3P14	2	BAR 4 X 1/4	0	6 1/2	4
1E14	1	3/4"-#9 EXP. METAL	0	7 3/8	1
		BLACK WEIGHT			710
		GALV.			25
FIELD	4	5/8"GMB W/HN,LW,FW	0	2 1/4	2
FIELD	6	5/8"GMB W/HN,LW	0	2	2
FIELD	2	5/8"GMB W/HN,LW	0	1 3/4	1
FIELD	2	1/2" SS U-BOLTS FOR 6" CONDUIT			2
		W/2HN, 2LW, 2FW			
		TOTAL WEIGHT			742

- STEEL NOTES:
1. ALL STEEL HOT-DIP GALVANIZED AFTER FABRICATION.
 2. PIECE MARK STAMPED INTO METAL WITH NOT LESS THAN 3/8" INCH CHARACTERS BEFORE GALVANIZING.
 3. ALL HOLES 11/16" FOR 5/8" BOLTS UNLESS NOTED.
 4. EDGE DISTANCE 1" UNLESS NOTED.
 5. ALL STEEL SHAPES ASTM A36 UNLESS NOTED.

Substation Enterprises, Inc.

145 Commercial Court, P.O. Box 2010
 Alabaster, AL 35007
 Phone: (205)685-2755, Fax: (205)685-2753

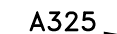
JACKSONVILLE ELECTRIC COOPERATIVE
 MERRILL ROAD (69/26kV) SUBSTATION

3Ø URD STAND

DATE: 08-06-25 DRAWN BY: CHD CHECKED BY: CHD DRAWING NUMBER: J-6799-SD14

SCALE: NONE APPROVED BY:

REV	DATE	DESCRIPTION
1	09-11-25	CORRECTED ANCHOR BOLT PATTERN IN 1P14, PER CUSTOMERS APPROVAL DATED 09-10-25.



STEEL NOTES:

1. ALL STEEL HOT-DIP GALVANIZED AFTER FABRICATION.
2. PIECE MARK STAMPED INTO METAL WITH NOT LESS THAN 3/8" INCH CHARACTERS BEFORE GALVANIZING.
3. ALL HOLES 1 1/16" FOR 5/8" BOLTS UNLESS NOTED.
4. EDGE DISTANCE 1" UNLESS NOTED.
5. ALL STEEL SHAPES ASTM A36 UNLESS NOTED.

REV	DATE	DESCRIPTION

145 Commercial Court, P.O. Box 2010
Alabaster, AL 35007
Phone: (205)685-2755, Fax: (205)685-2753
JACKSONVILLE ELECTRIC AUTHORITY
MERRILL ROAD (69/26kV) SUBSTATION

L.A. MTG.

DATE: 08-07-25	DRAWN BY: CHD	CHECKED BY: CHD	DRAWING NUMBER: J-6799-SD15
SCALE: NONE	APPROVED BY:		